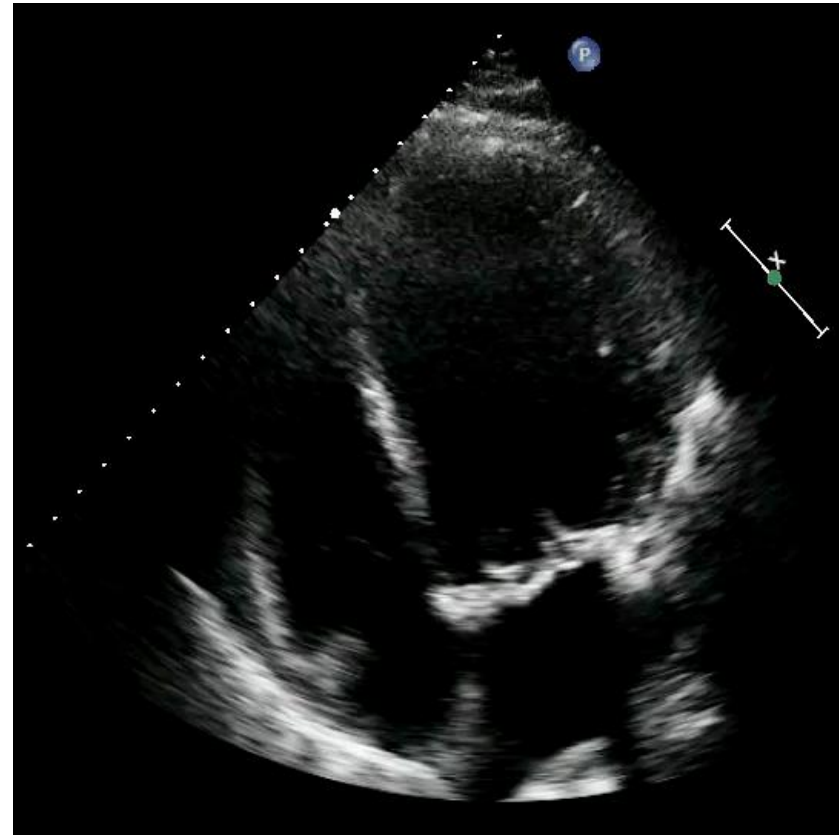


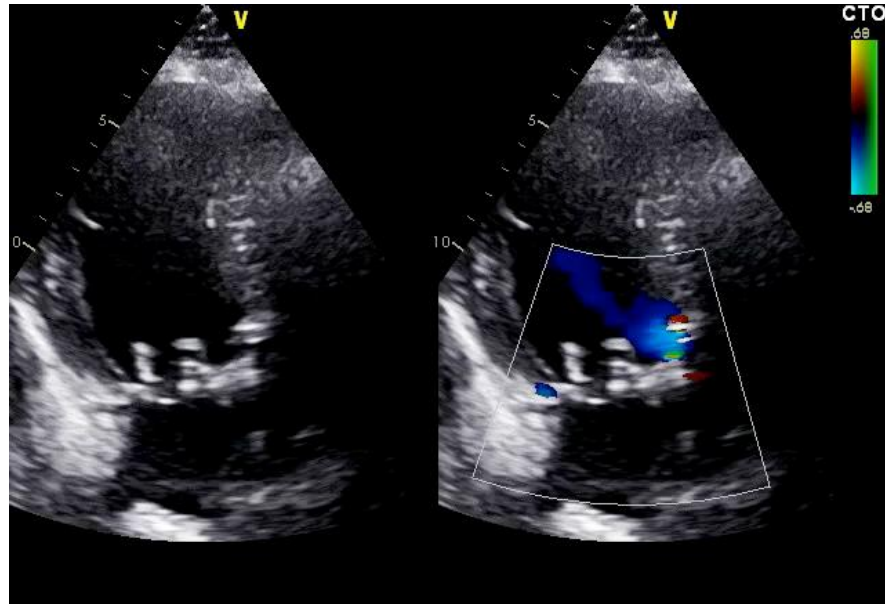


Aortic and mitral valves dysfunction after surgical replacement

- 64 years-old male
- Infective aortic and mitral valves dysfunction (1999):
 - Normal LVEF (63%)
 - Surgical aortic and mitral valves replacement
 - Biological aortic Hancock 23 prosthesis
 - Biological mitral Hancock 29 prosthesis
- Admission due to congestive heart failure (2014):
 - Aortic prosthesis dysfunction with severe regurgitation
 - Severely depressed LVEF (25%)
 - Heart Team discussion: **aortic valve-in-valve procedure**



TTE at discharge after aortic valve-in-valve



Normofunction of SAPIEN 3 prosthesis:

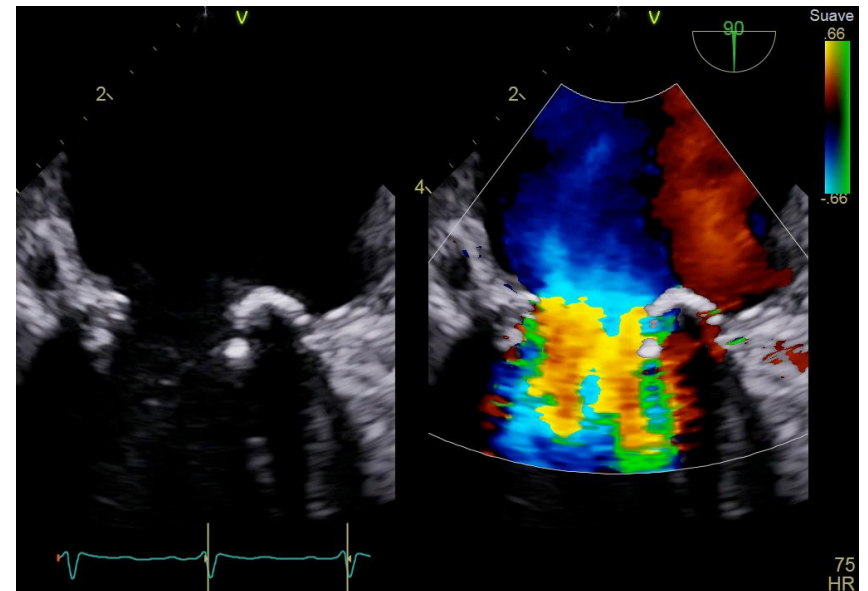
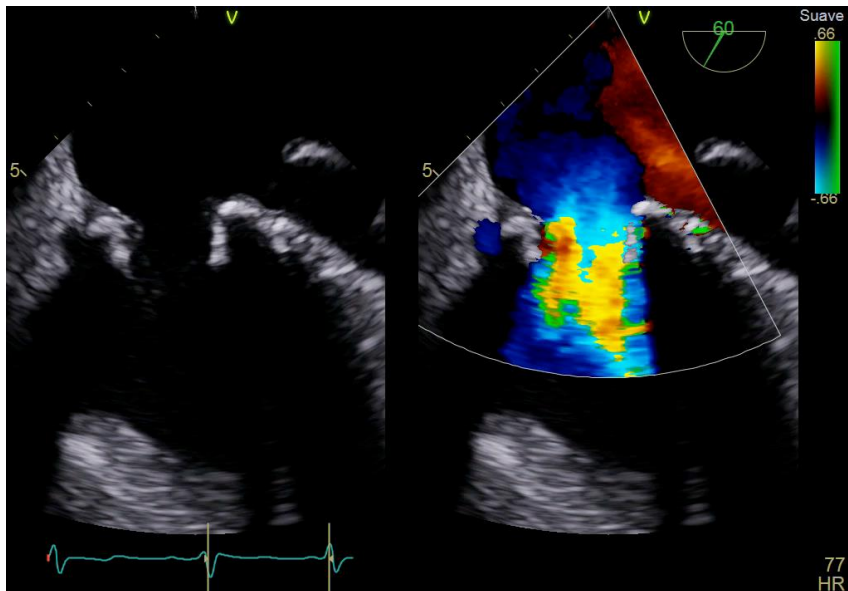
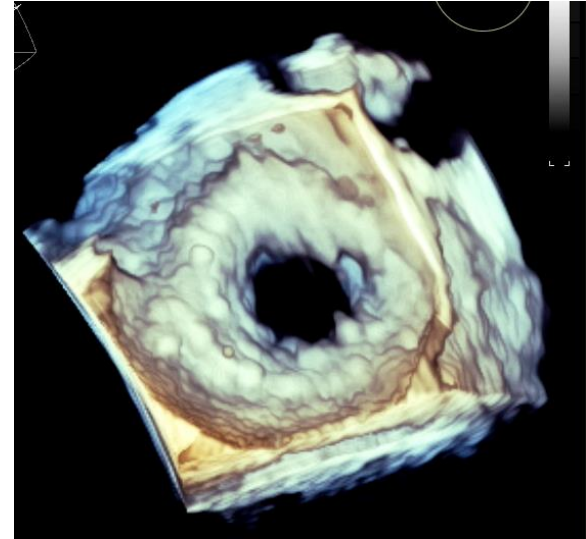
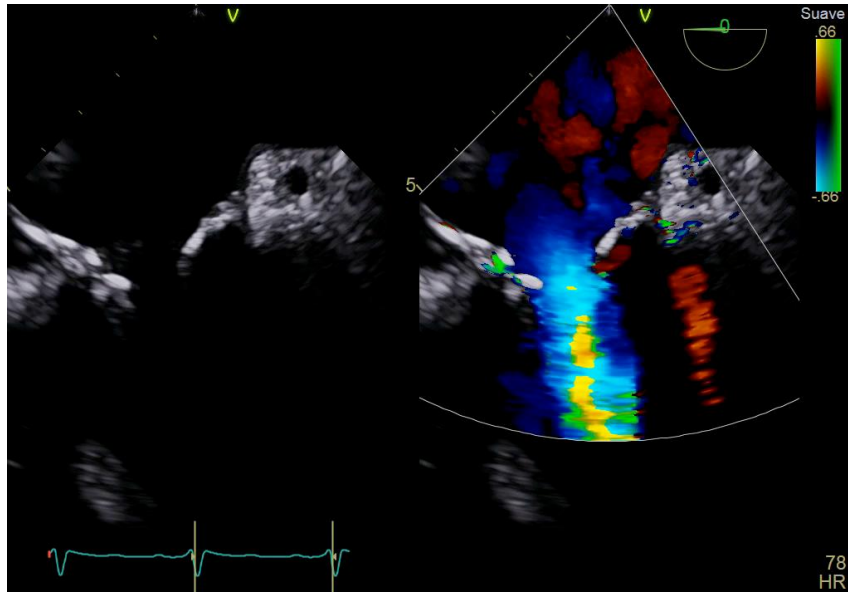
- Residual mild regurgitation
- Mean gradient 18 mmHg

Normofunction of mitral
prosthesis




- Outpatient clinical consultation (2017):
 - New York Heart Association functional class I
 - Normofunction of aortic SAPIEN 3 prosthesis
 - Dysfunction of mitral prosthesis: mean gradient 17 mmHg
- Admission due to congestive heart failure (2020):
 - LVEF 40%
 - Severely depressed right ventricular ejection fraction (FAC 15%) and moderate tricuspid regurgitation
 - Heart Team discussion: **mitral valve-in-valve procedure**

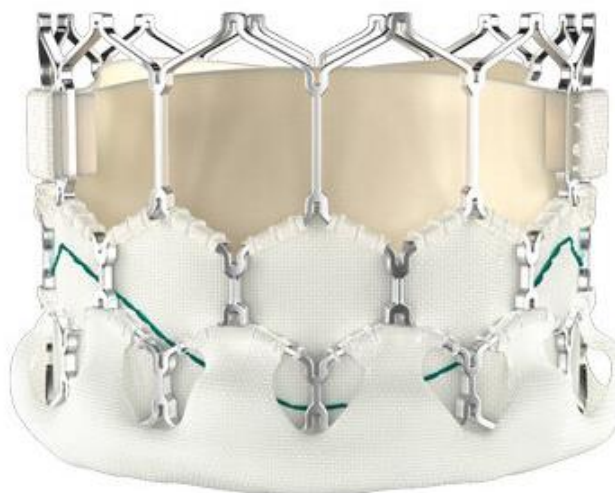
TEE at admission



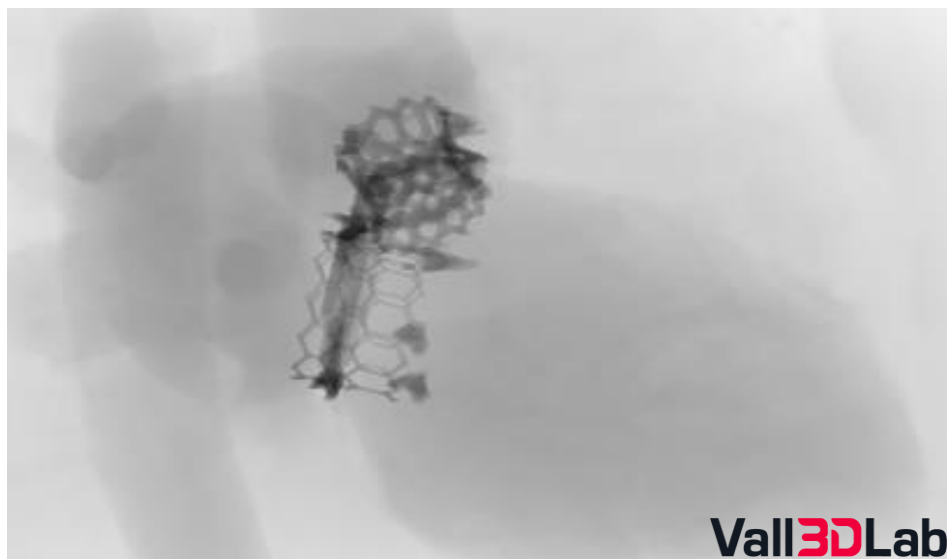
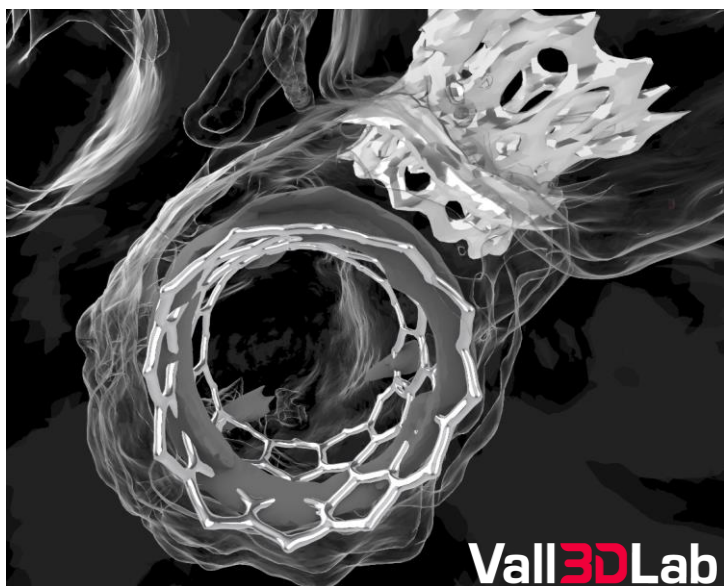
3D planification based on CT



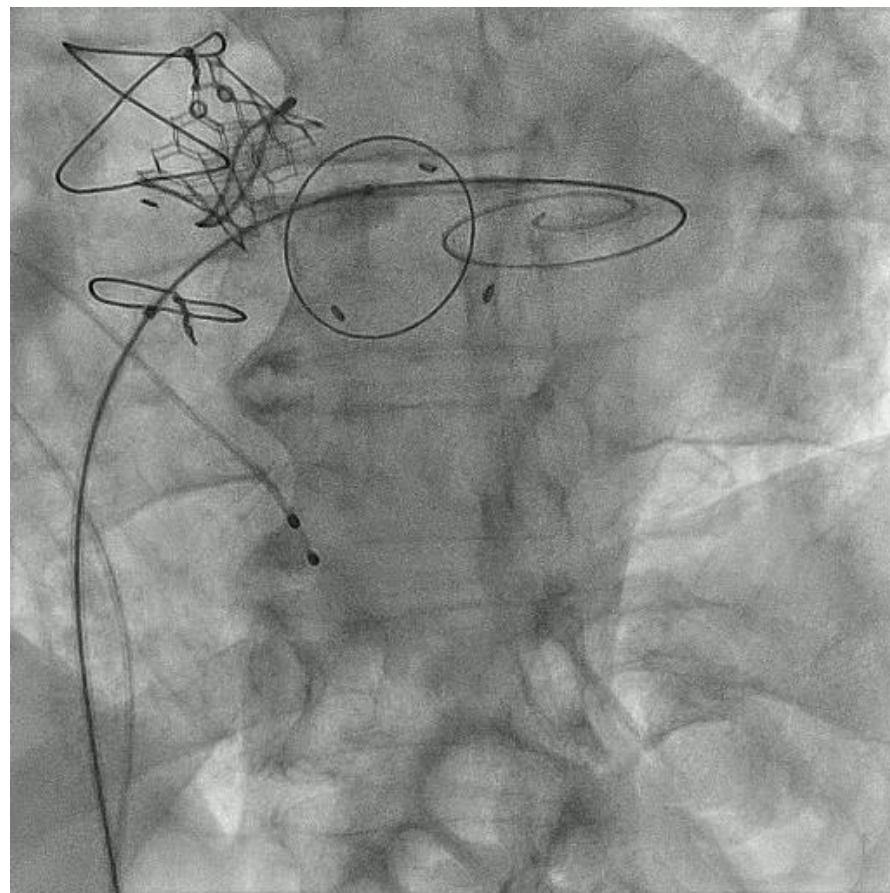
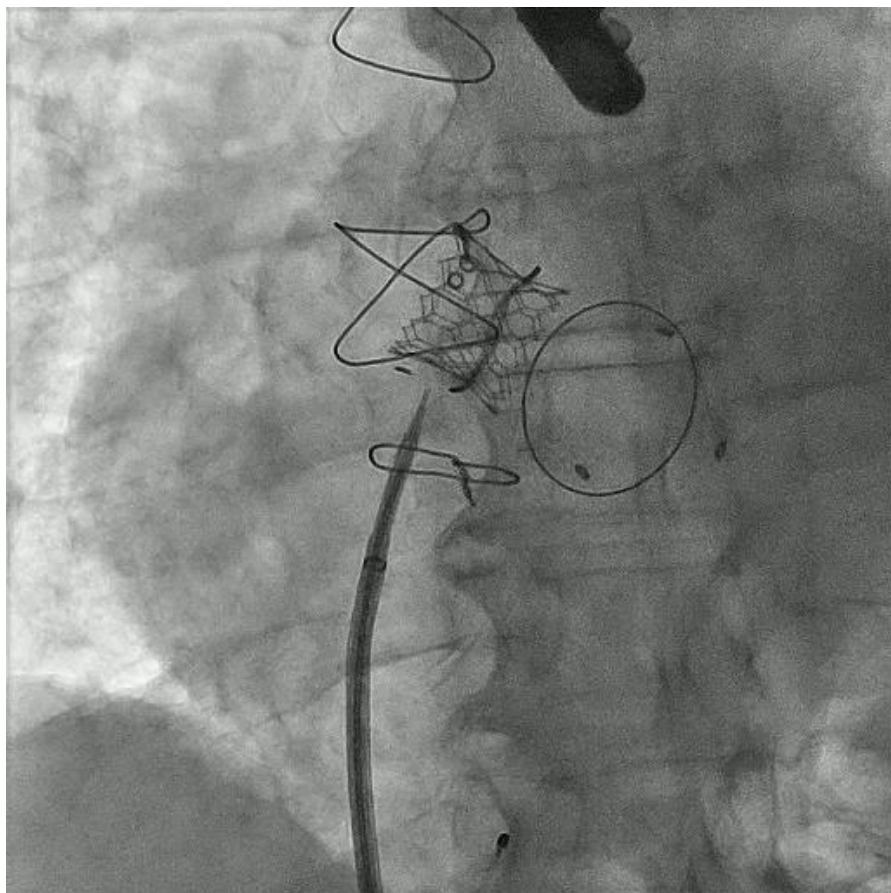
Myval THV Size Matrix & Technical Specifications	Perimeter	Native annulus area	Area-derived diameter	Native annulus size by TEE
<p>Area 594 mm²</p>  <p>19.25 mm</p> <p>27.5 mm</p>	86.39 mm	510-630 mm ²	25.5-28.3 mm	22.5-26.5 mm



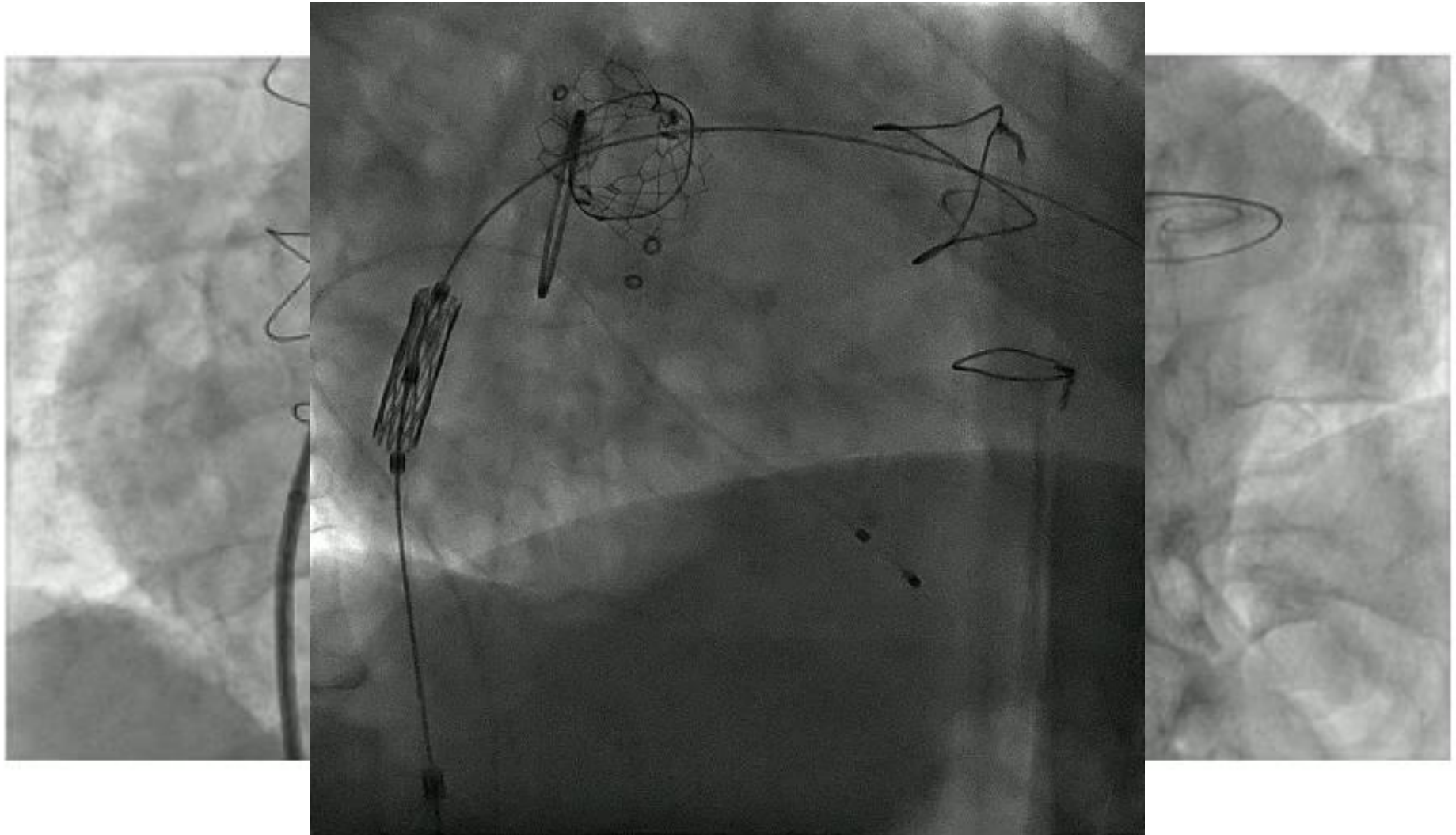
Virtual and angiographic simulation



Mitral MyValve 27.5 valve-in-valve procedure



Mitral MyValve 27.5 valve-in-valve procedure



A second balloon dilatation was performed for flaring the ventricular side of the prosthesis

- At discharge:
 - NYHA class I
 - **Mitral Myval prosthesis:**
mean gradient 6 mmHg
 - **Aortic SAPIEN 3 prosthesis:**
mean gradient 16 mmHg
 - No left ventricle outflow tract obstruction
- 3 months follow-up:
 - NYHA class I
 - Normofunction of aortic SAPIEN 3 and mitral Myval prosthesis

