

Delayed Mini-Culotte stenting for the Ostial Large Side branch stenosis

Dr.Pankaj Jariwala

MD, DNB, DNB, MNAMS, FICPS, FACC, FSCAI.

Fellow, ICPS, Paris, France,

Consultant Interventional Cardiologist,

Yashoda Hospitals, Somajiguda, Hyderabad, India.

Clinical Presentation

45-years-female c/o severe angina at rest, intermittent and, exertional angina for 5 days.

H/o similar chest pain 6 months back and underwent **Angioplasty to LAD** at another center.

HS - Troponin I Elevated.

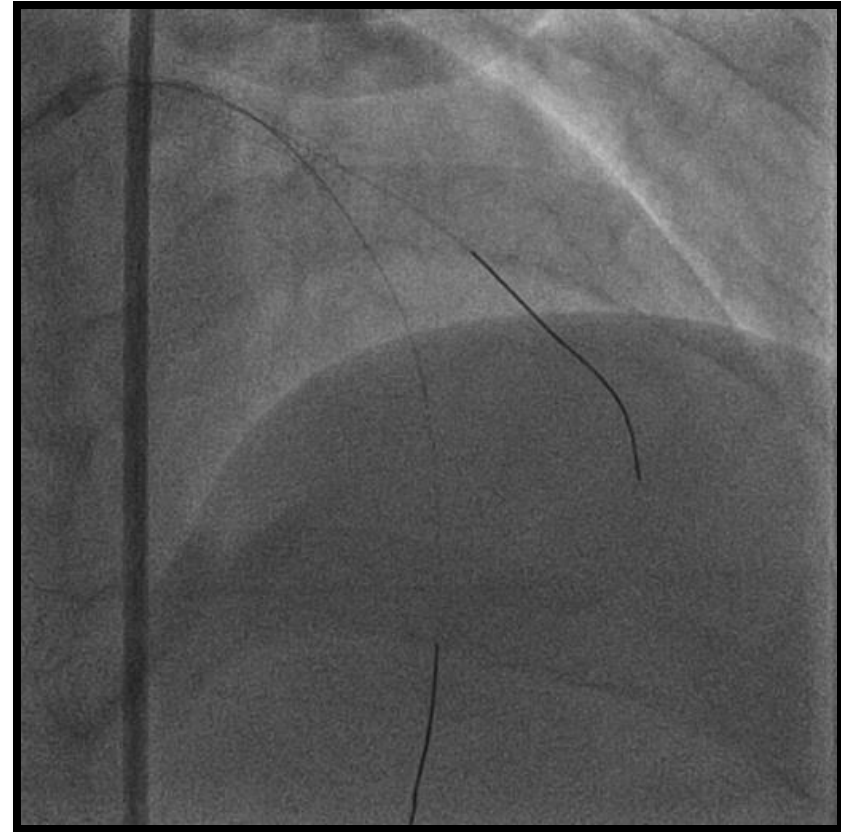
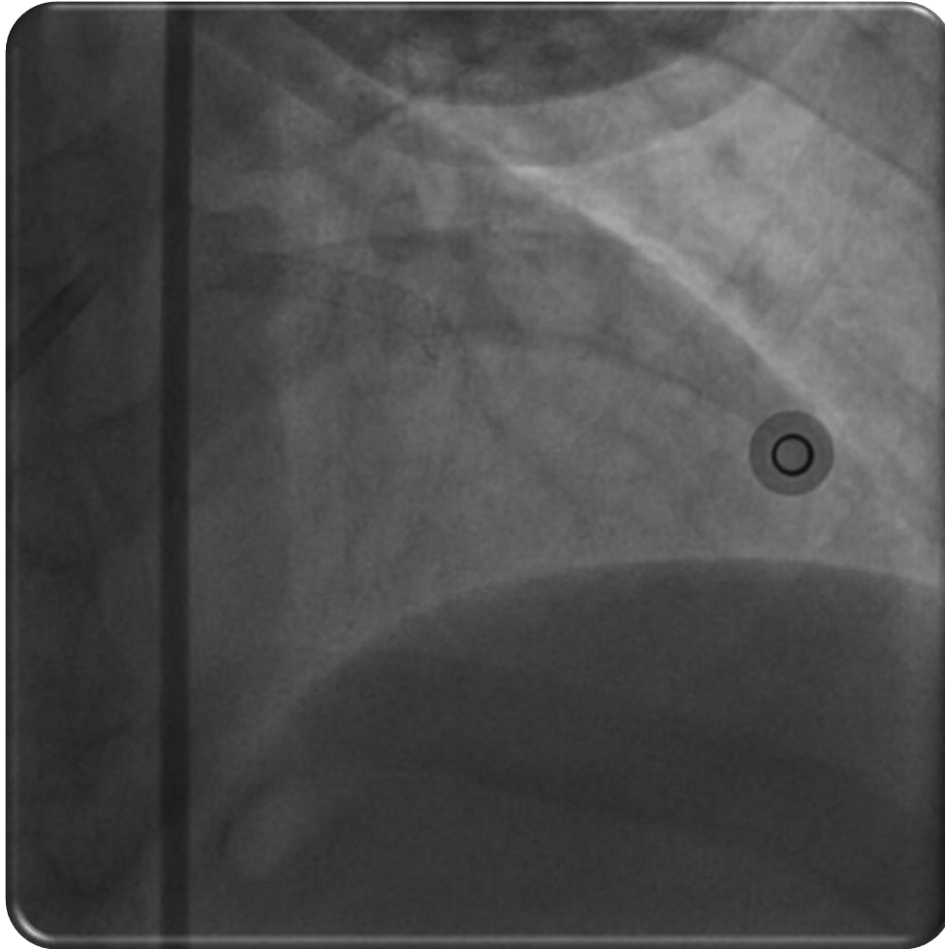
Hemodynamically stable.

ECG – T-Wave Inversions in V1-V6; I; aVL.

Echocardiography – RWMA [Hypokinesia of LAD territory];Mild LV dysfunction.

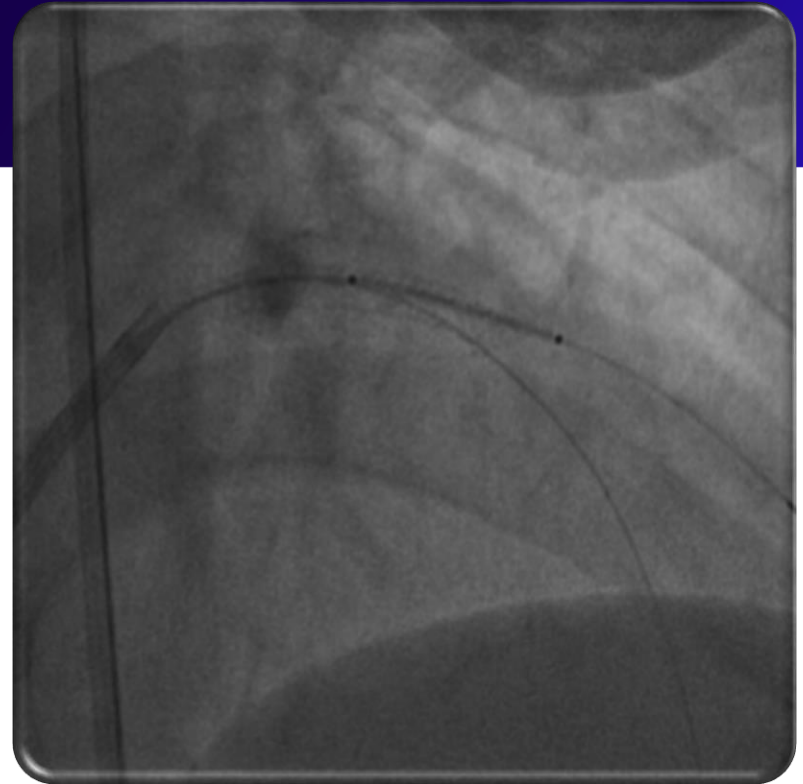
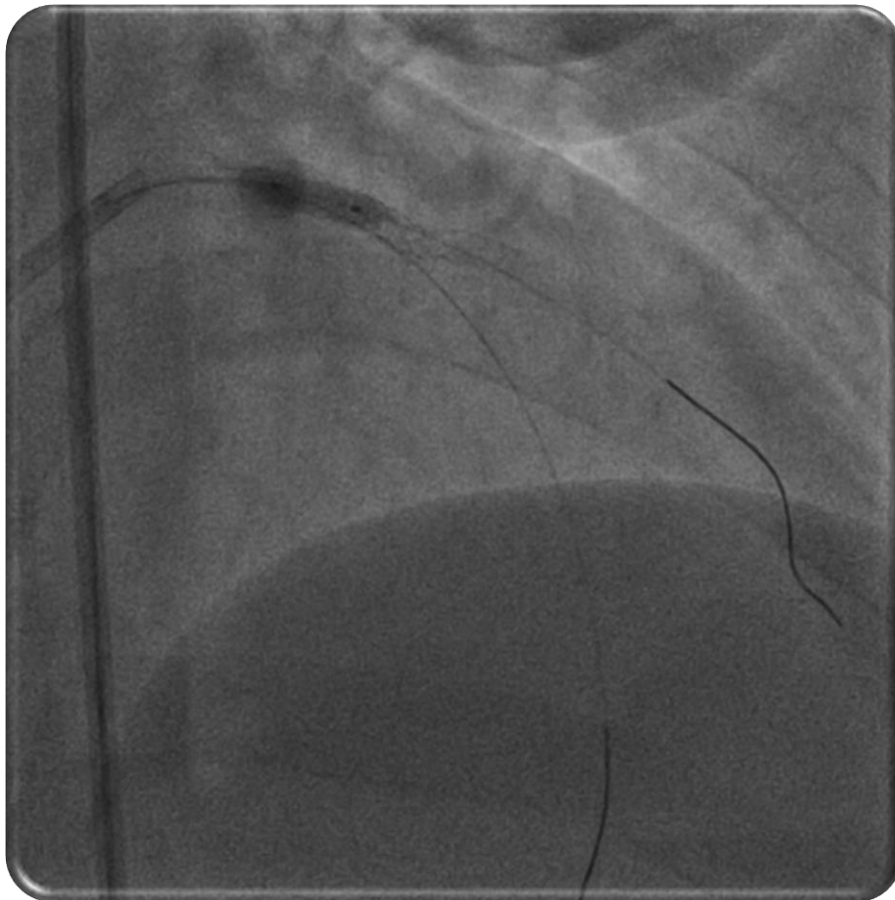
Subjected for Coronary Angiography.

Coronary Angiography



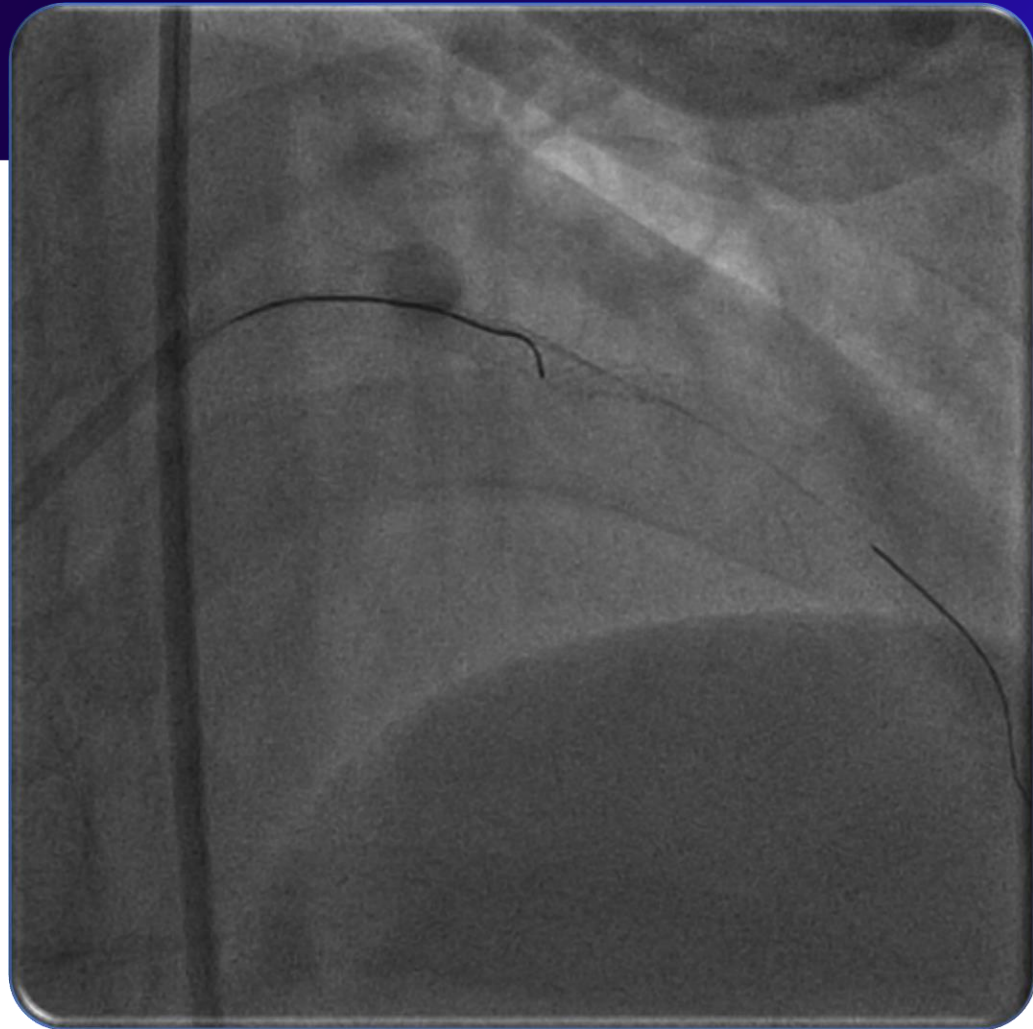
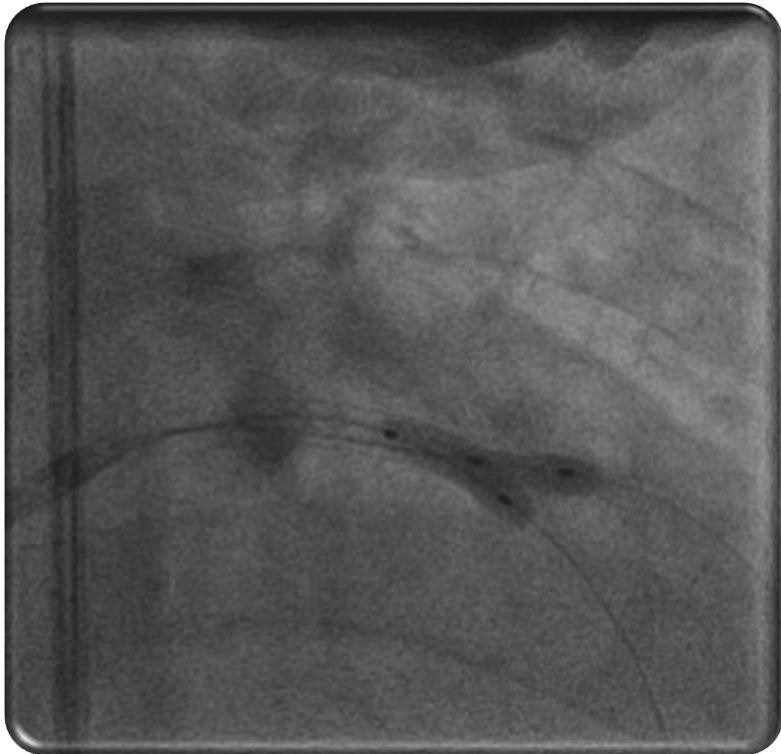
**Ostial Stenosis of large
Side branch**

***Stent across the MV to SB –
Delayed Modified Culotte.***



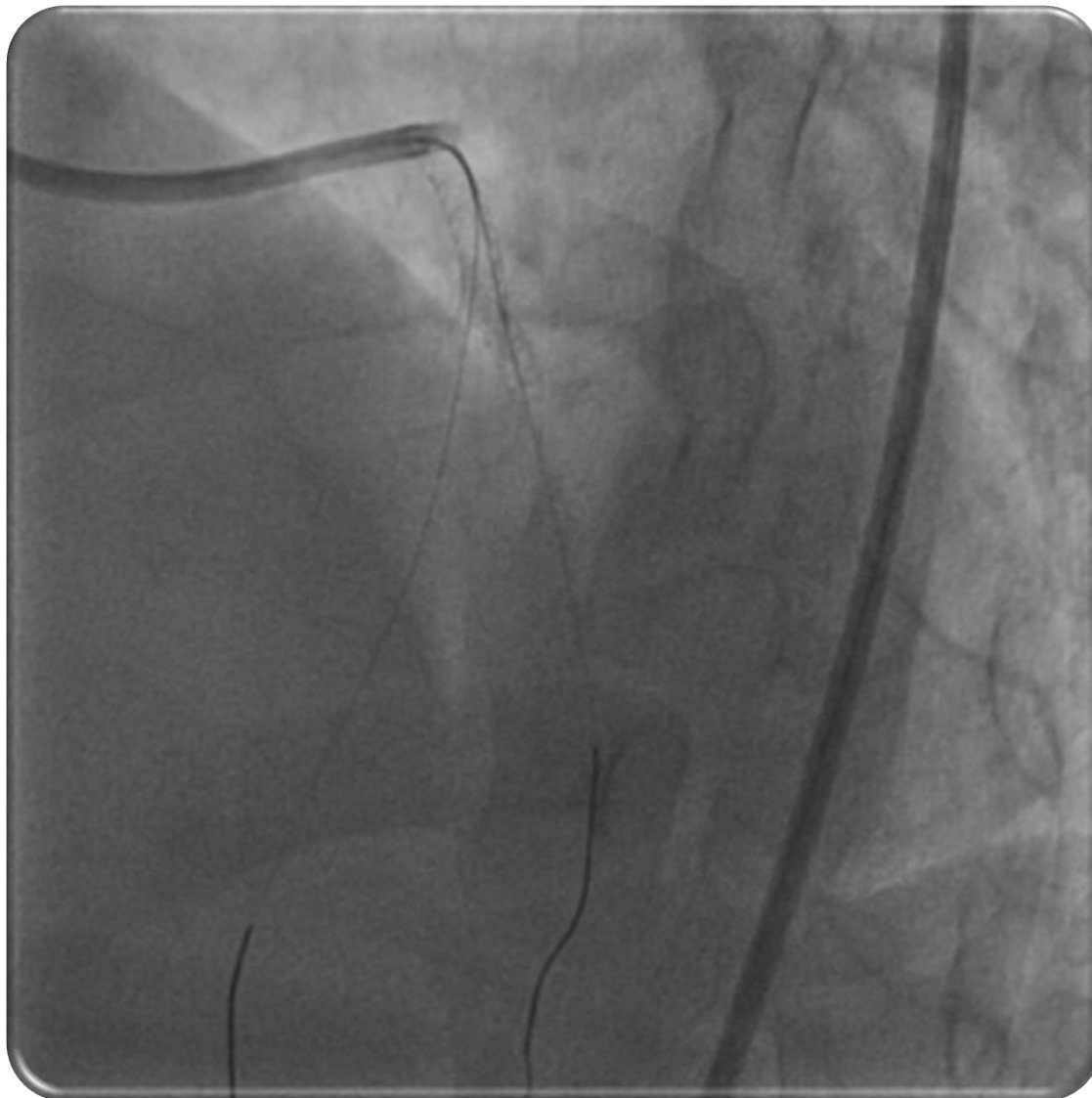
***Proximal
Optimization
technique***

Recrossing of the Wire



***Final Kissing Balloon
angioplasty***

Final Result



Definition

Delayed

- after the endothelialization of MV stent

Mini/Partial

- Partial overlapping of MV stent to SB stent.

Culotte

- Common overlap of both the stents in the MV.

Take Home Message

Common to have ostial side branch(SB) restenosis across the main vessel (MV) stent.

Sizable large side branch stenosis, patient experiences symptom - ACS.

Delayed presentation – culotte when MV and SB of equal size.

*Thank
you*

