



Single arm approach for transcatheter aortic valve implantation

Jerzy Sacha, MD, PhD, FESC, FHRS

Department of Cardiology, University Hospital in Opole, Poland



Fully percutaneous subclavian approach constitutes an attractive way for TAVI in the absence of the femoral access

SINGLE ARM APPROACH FOR TAVI

Two cases of frail patients with a problematic femoral access



Case 1: 86-year-old man

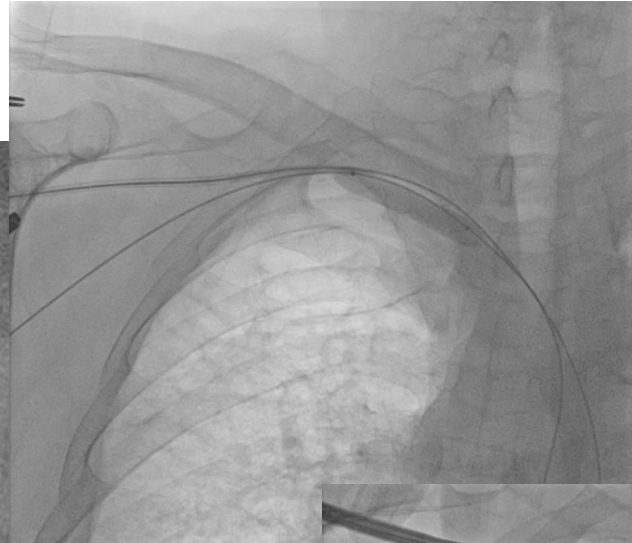
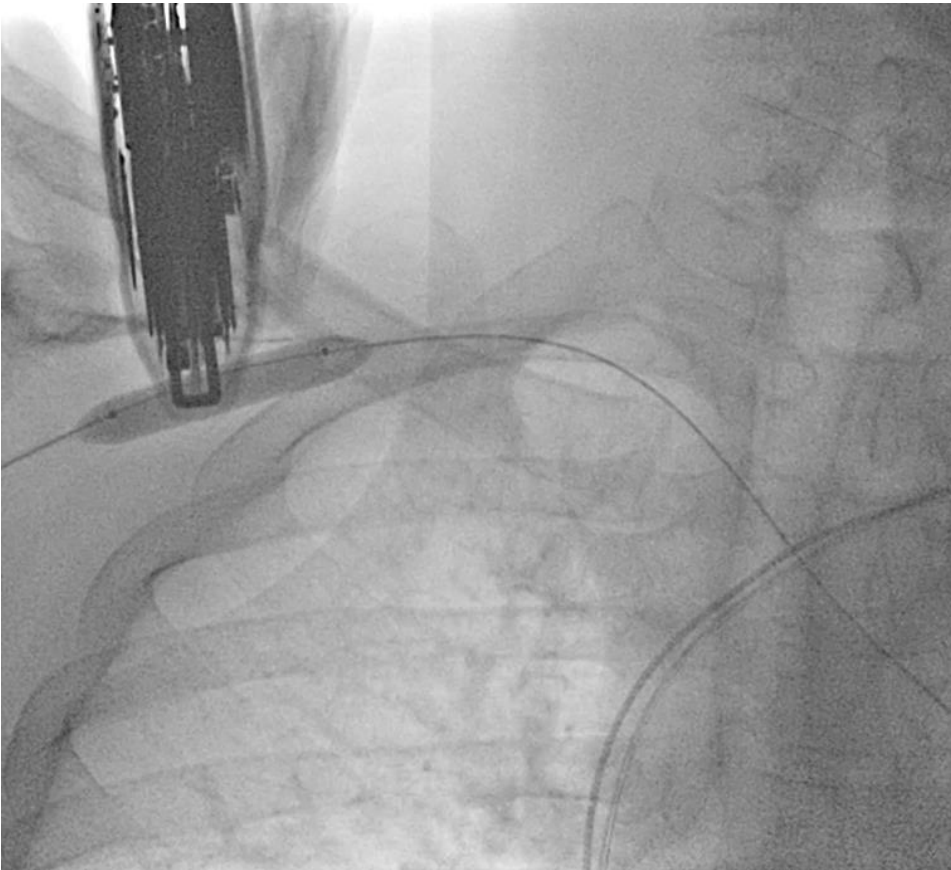
Case 2: 85-year-old woman

First, a 7F sheath and a long safety guidewire was inserted through the radial access, and then the angiography was performed – the puncture was done under ultrasound guidance

Case 1

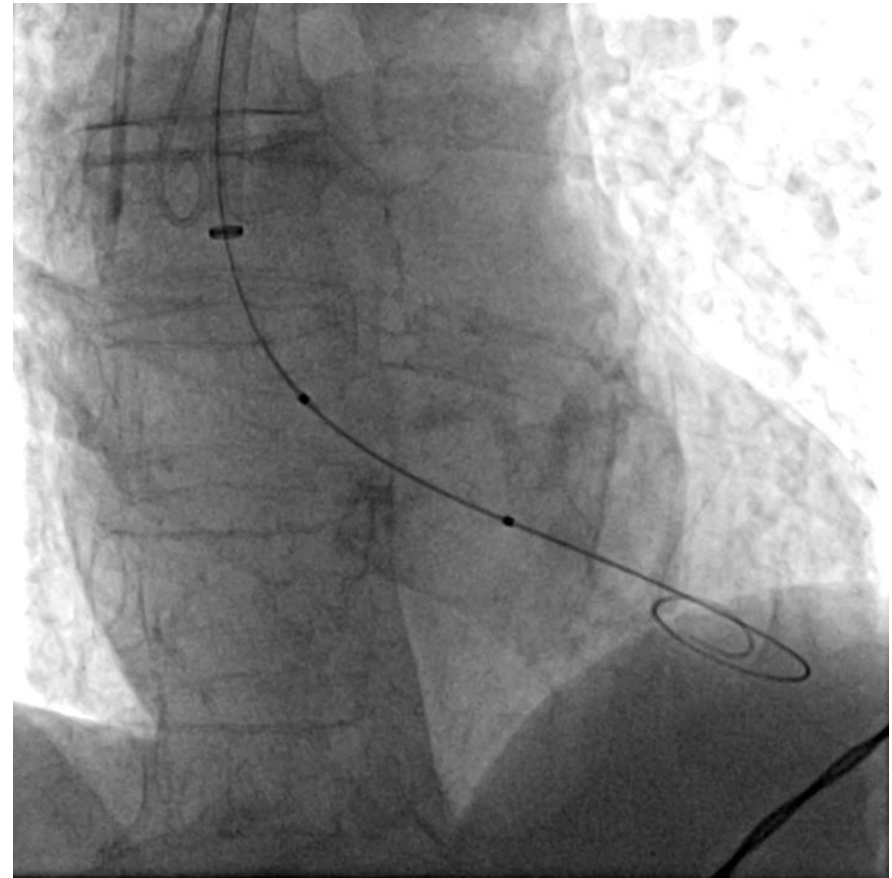


Alternatively, the axillary artery can be punctured on a peripheral balloon inserted over the safety guidewire



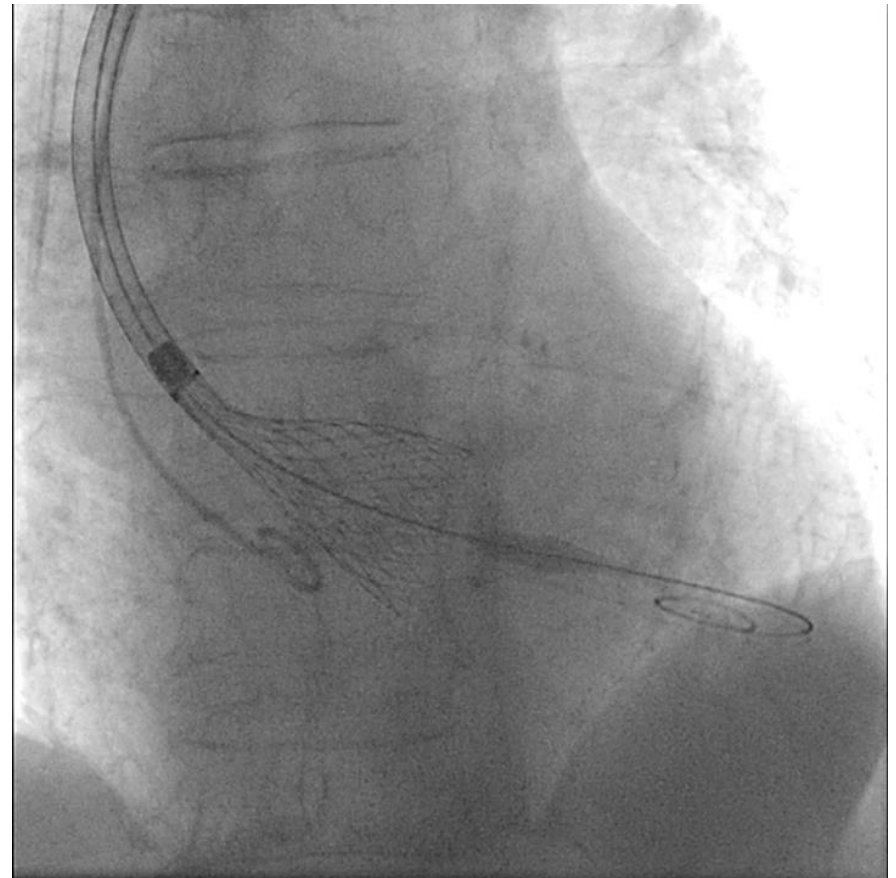
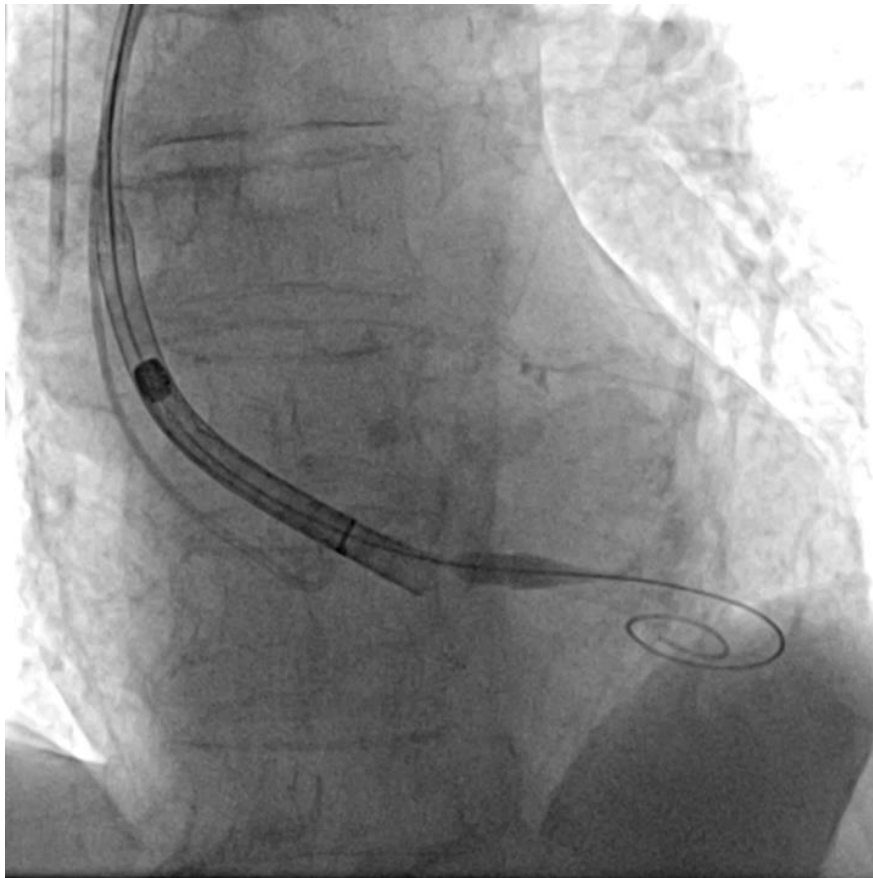
A pig-tail was inserted over the safety guidewire, while the Confida wire was placed through the 14F sheath - the Confida wire was used for left ventricle pacing

Case 1



Transcatheter aortic valve implantation

Case 1



Case 1

Single arm approach for TAVI – a removal of the delivery system



Case presentation

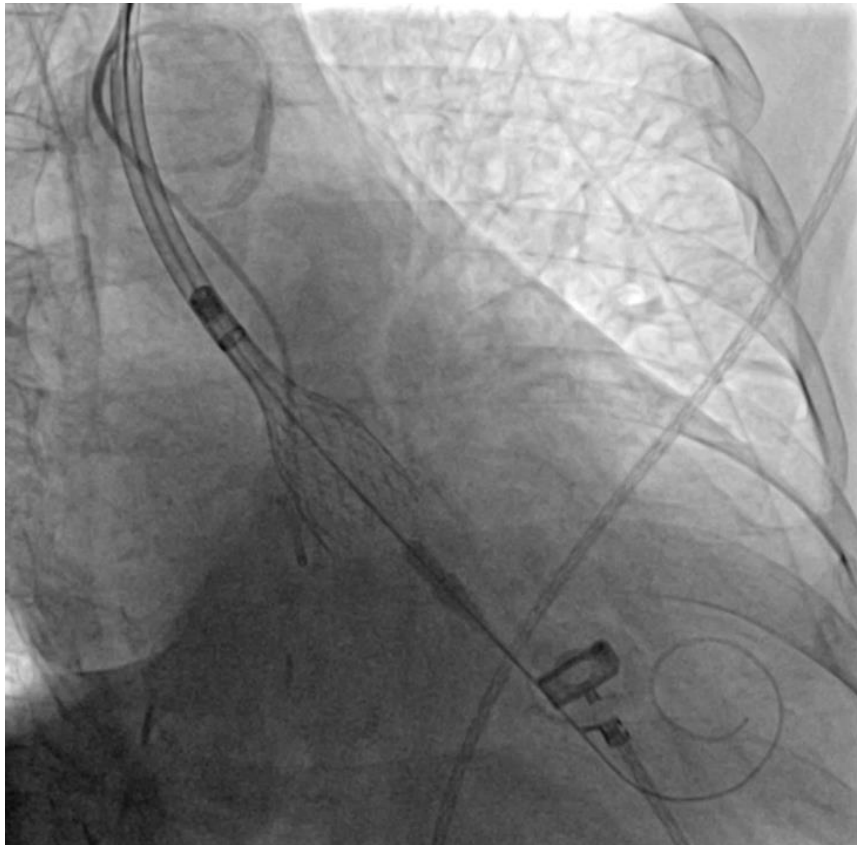
Final angiography performed through the radial sheath

Case 1



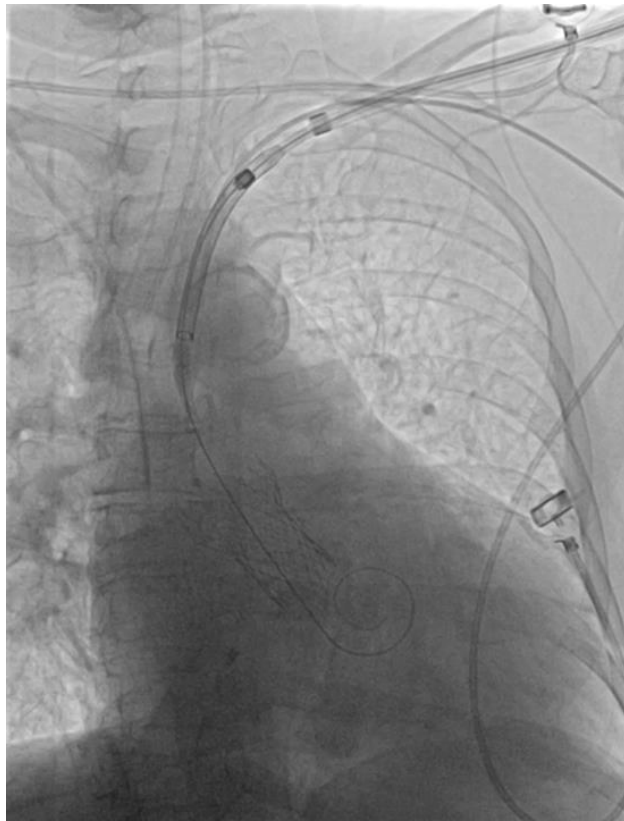
85-year-old woman: single arm approach for TAVI – cusp-overlap method

Case 2



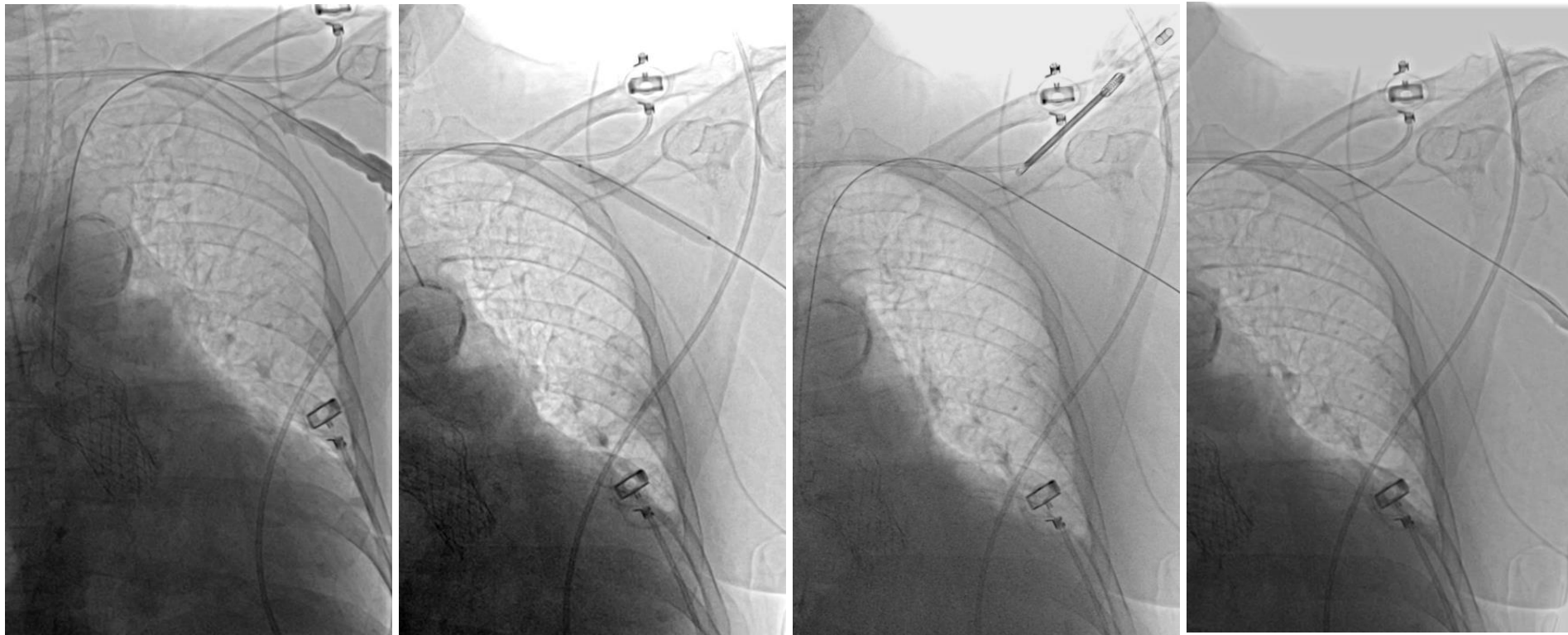
Single arm approach for TAVI: puncture site closure

Case 2



Management of access site bleeding

Case 2



Single arm approach for TAVI:

1. Early ambulation (frail subjects, risk of deep vein thrombosis)
2. Low complexity of the procedure
3. Patient comfort after TAVI

Operators:

Jerzy Sacha, Krzysztof Krawczyk, Witold Gwóźdź, Radosław Gawroński,
Jarosław Bugajski