



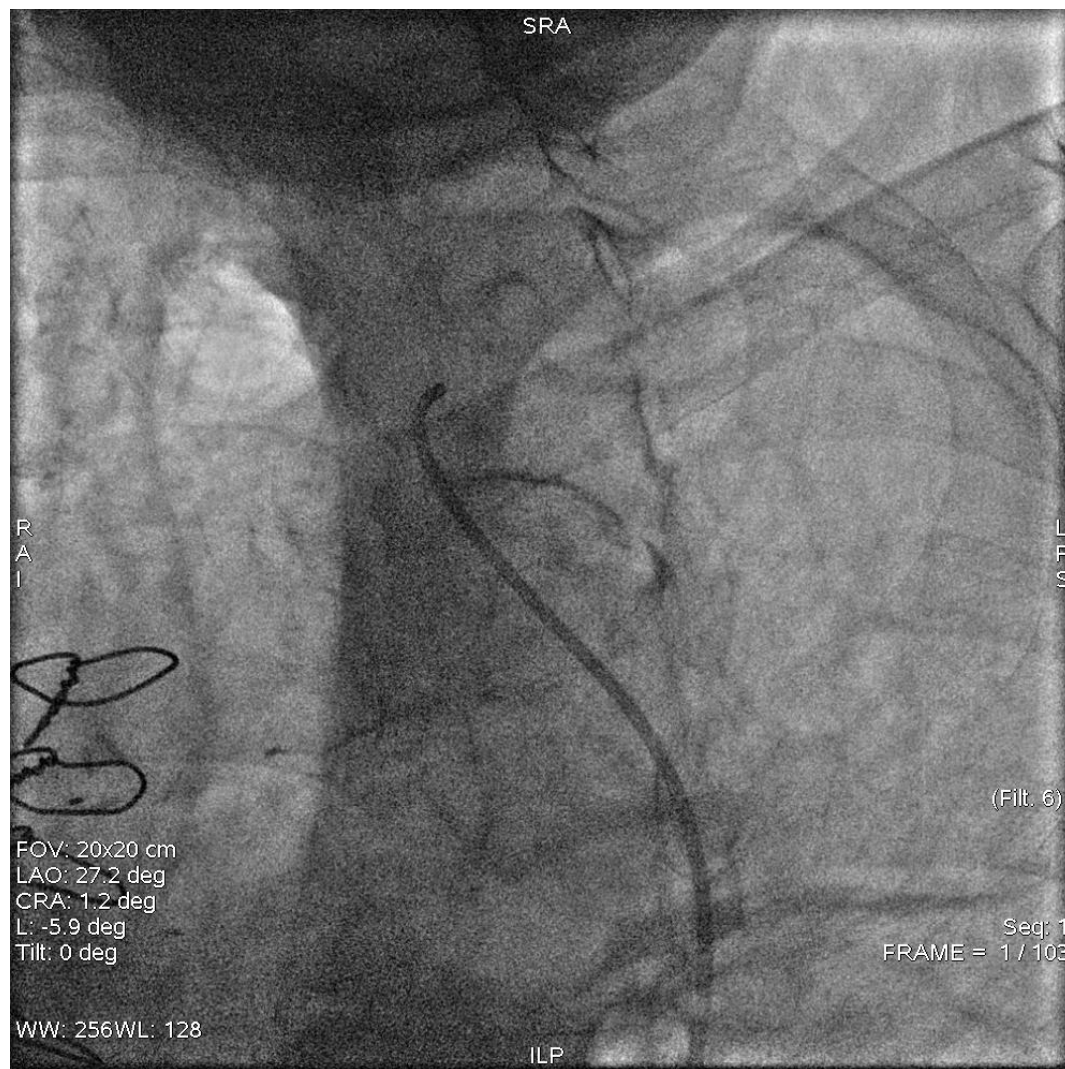
Simultaneous myocardial infarction and arm ischemia

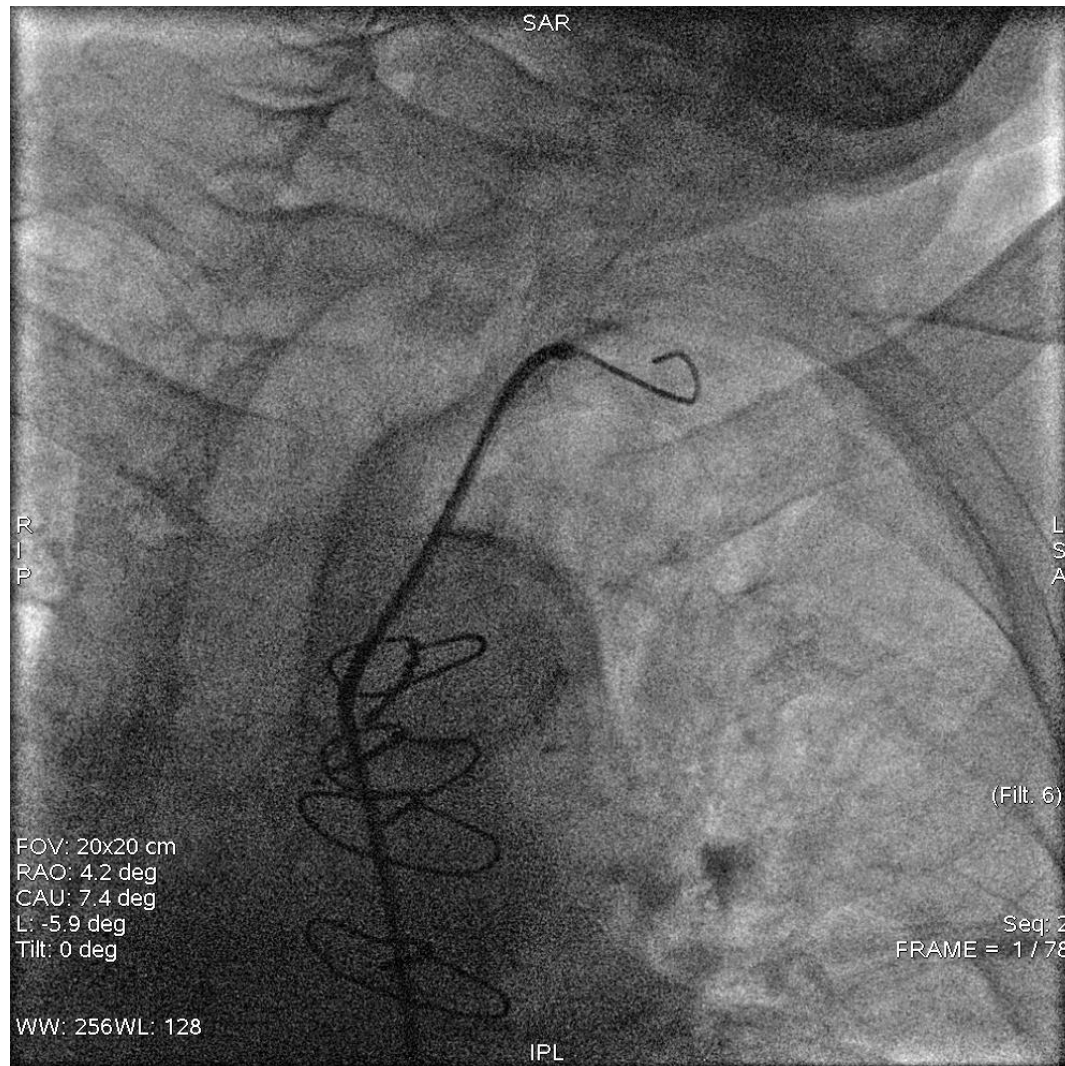
multidisciplinary approach

I have nothing to declare

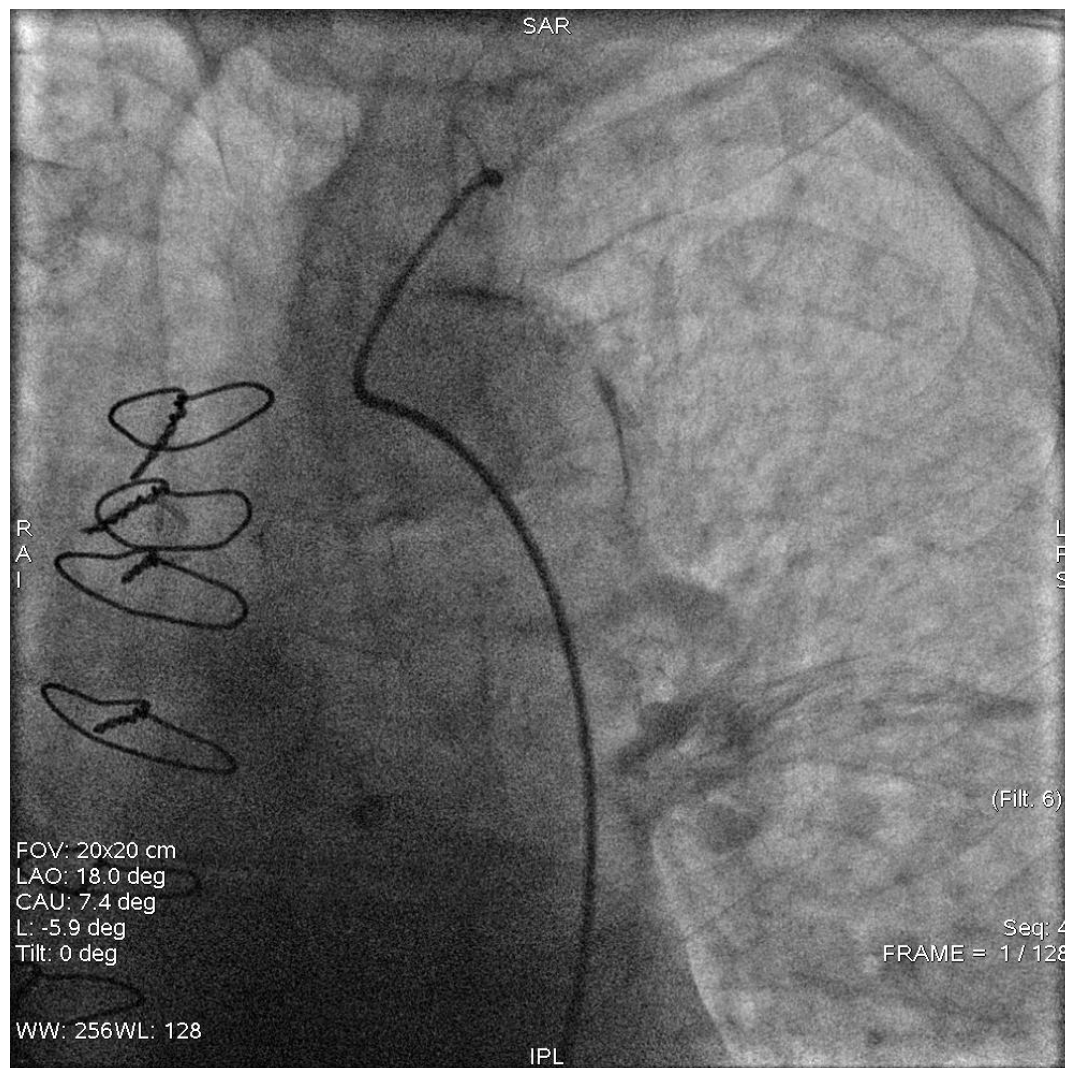
- 82-year-old male
- Cardiovascular risk factors: hypertension; dyslipidemia; diabetes
- In 1982 stroke with complete functional recovery
- In 2001 myocardial infarction and coronary artery bypass grafting with a left internal mammary artery to left anterior descending
- Paroxysmal atrial fibrillation in anticoagulation therapy

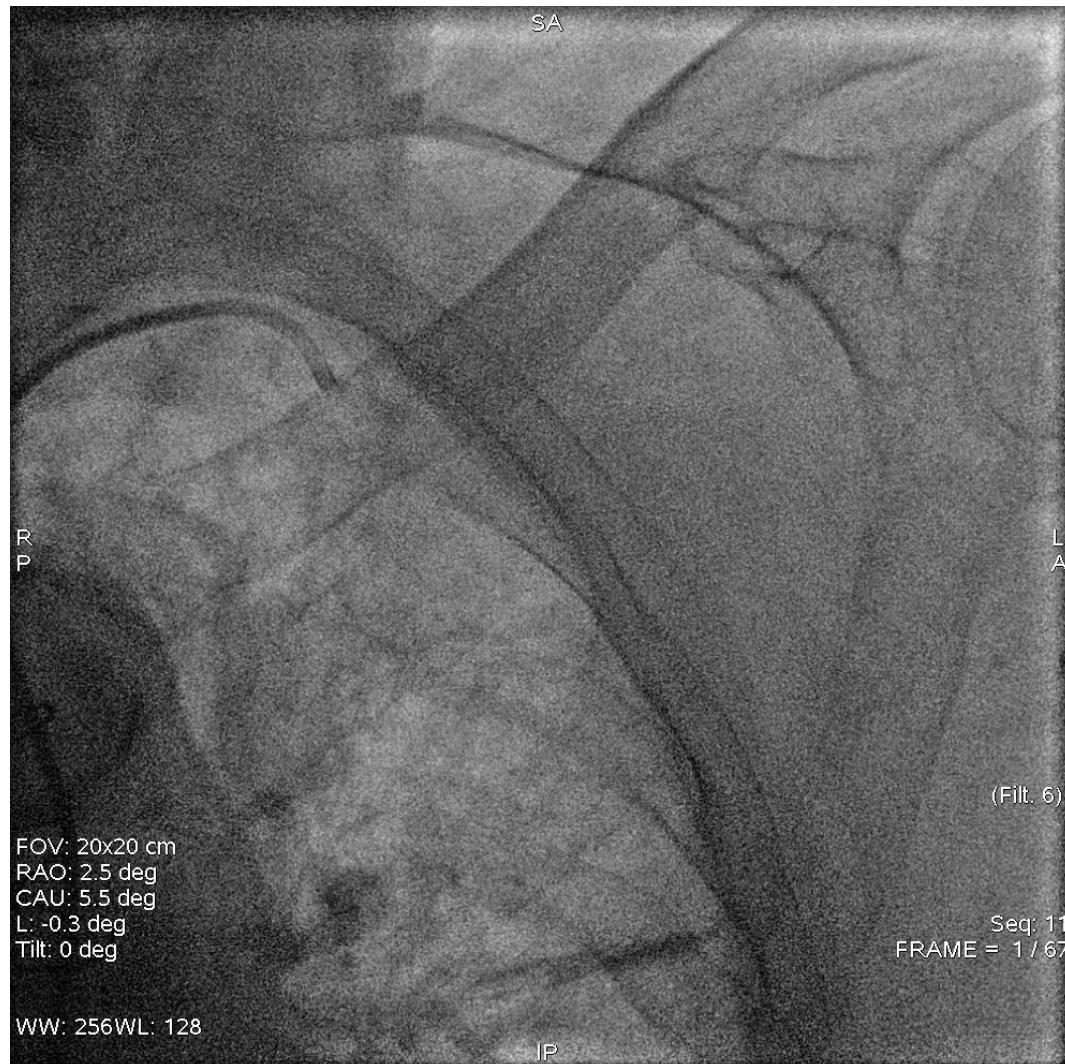
- Chest pain and signs of acute severe left arm ischemia (pallor, pulselessness and poikilothermia)
- Atrial fibrillation and anterior ST-elevated myocardial infarction at EKG
- An urgent echocardiogram showed apex and distal sept akinesia
- An urgent ultrasound scan showed the occlusion of the left subclavian artery and the absence of any arterial flow to the hand

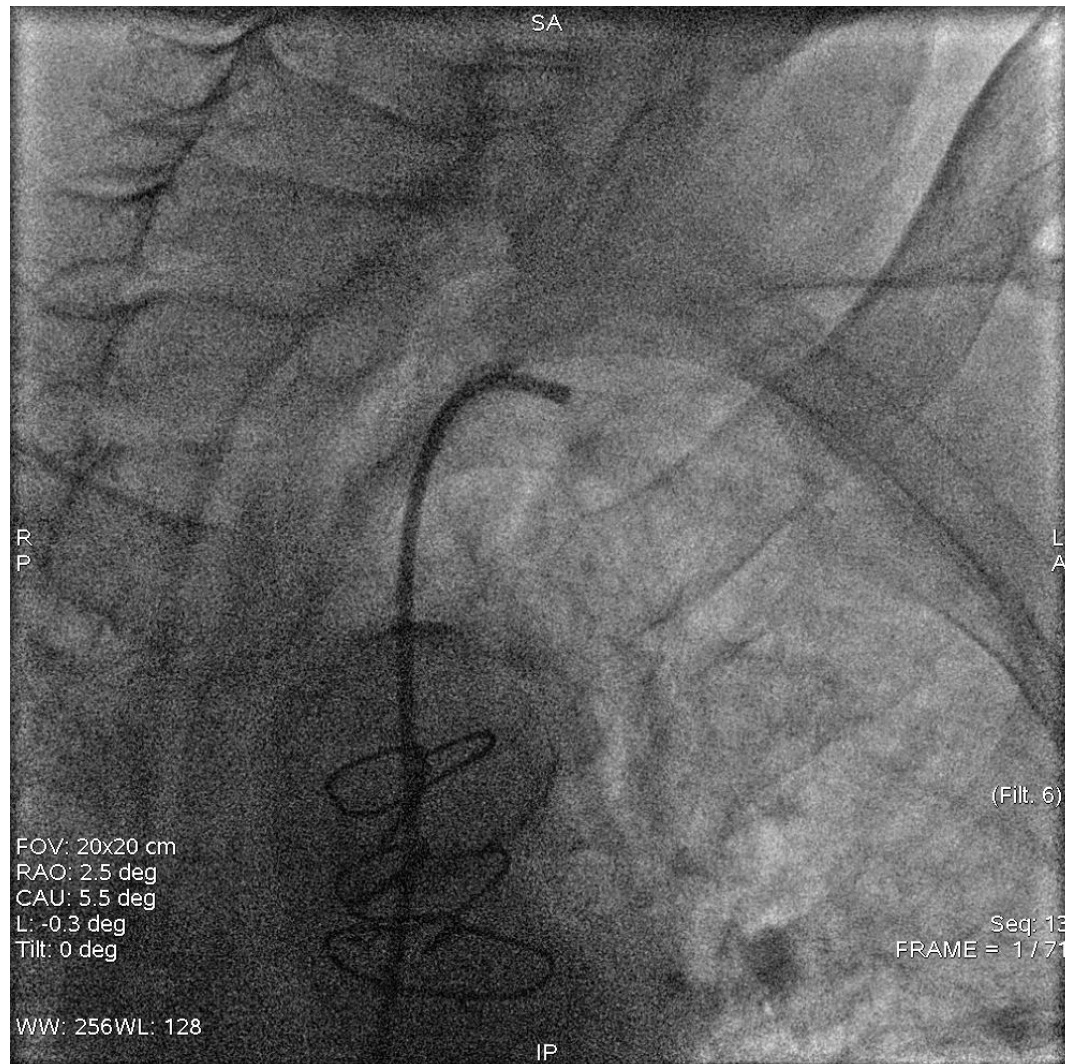




Coronary angiography







Thank you for the attention