



LM Dissection
Managed By False Lumen
Decompression

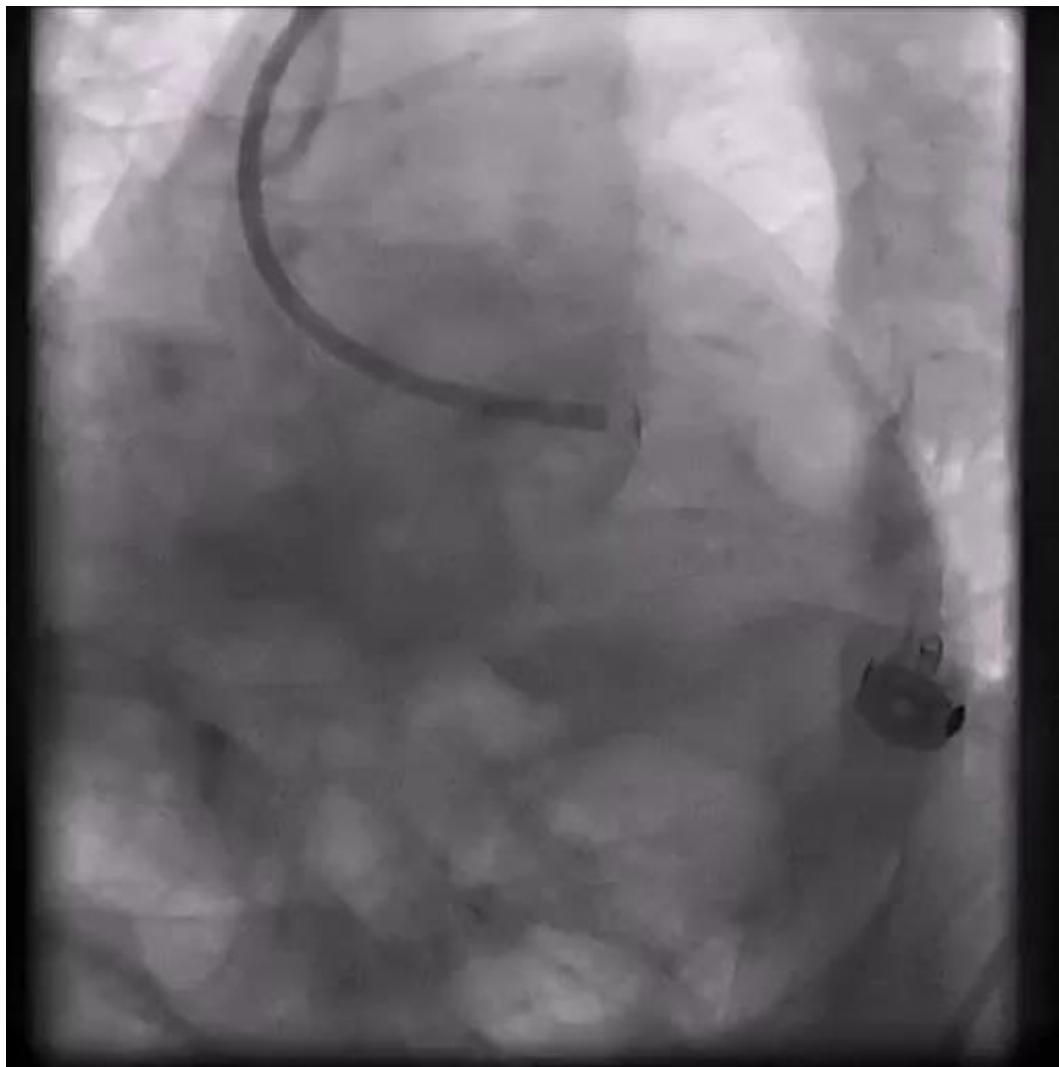
Mehrdad Taheriyoun MD
Chamran Heart Center
Isfahahn Iran

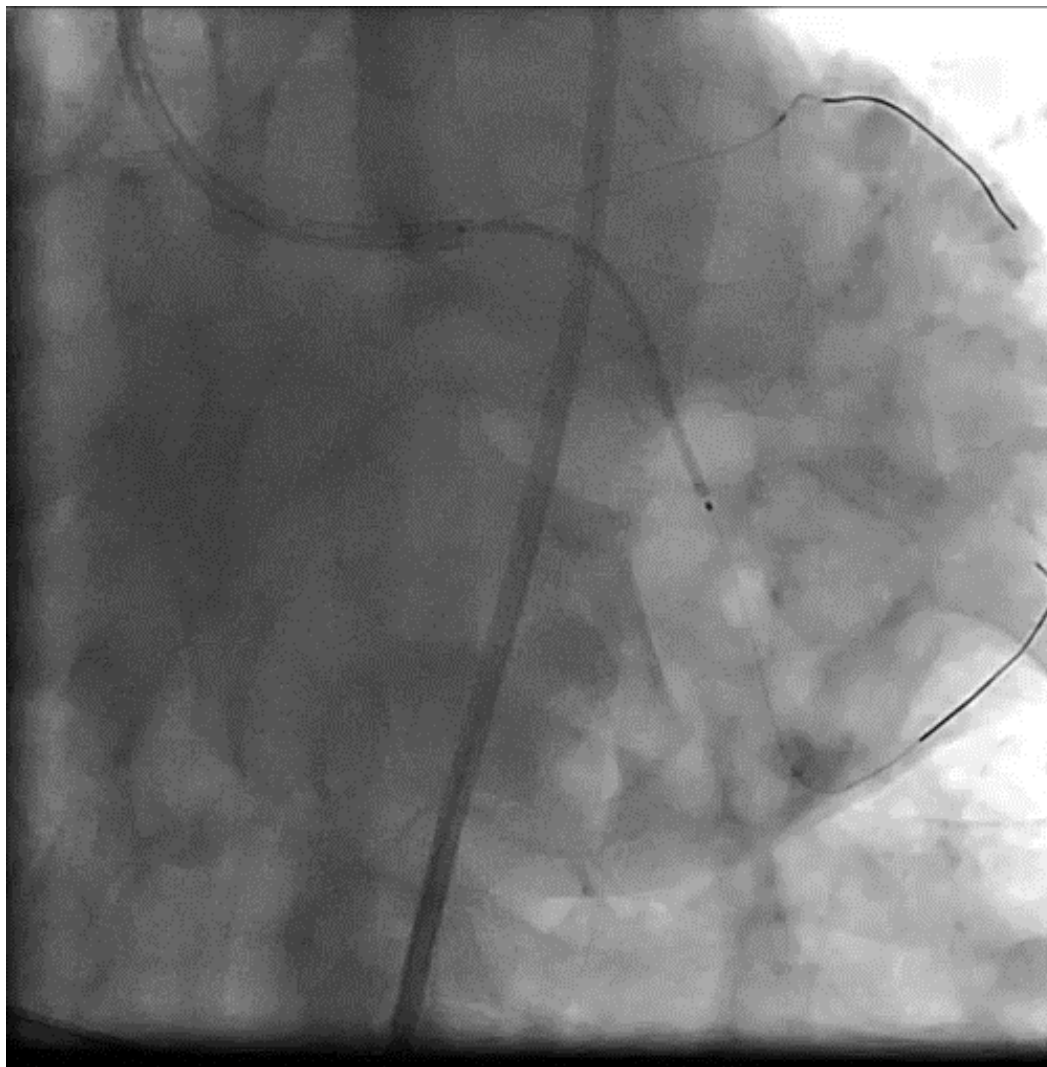
HISTORY

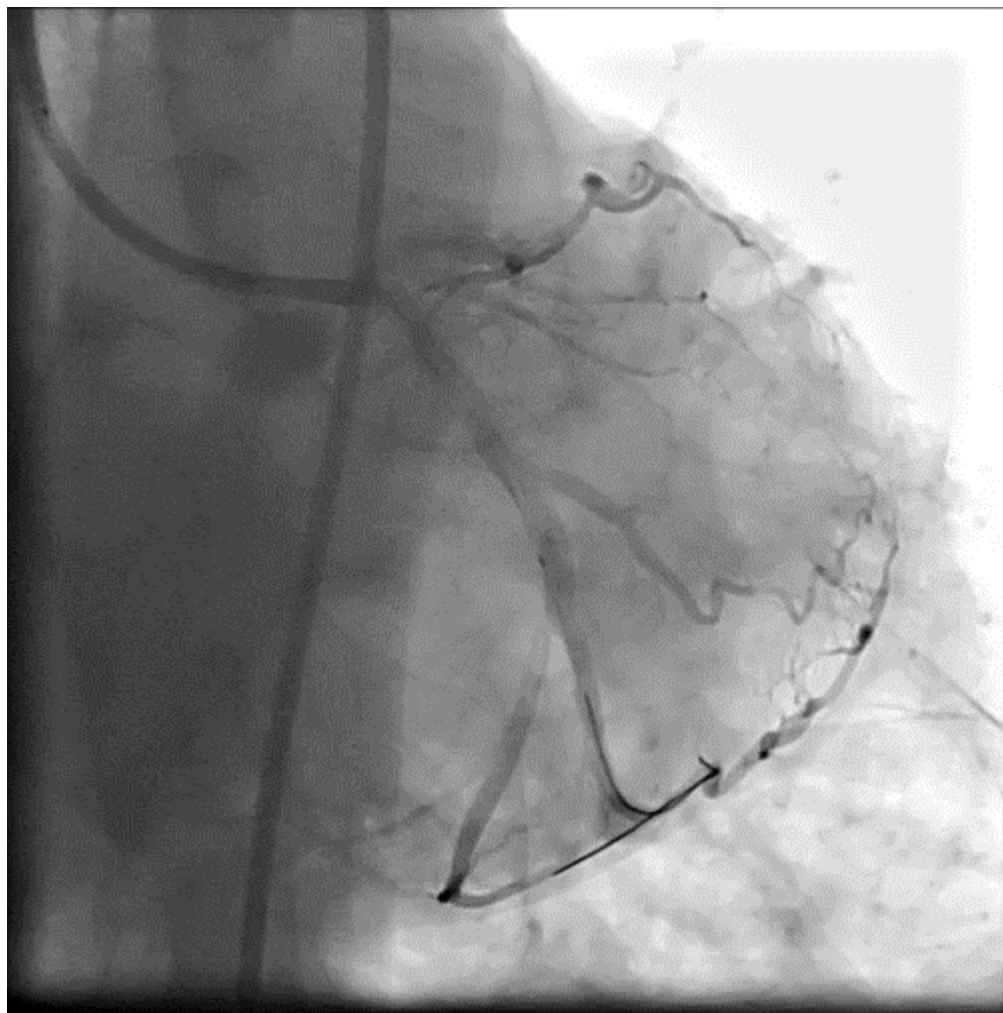
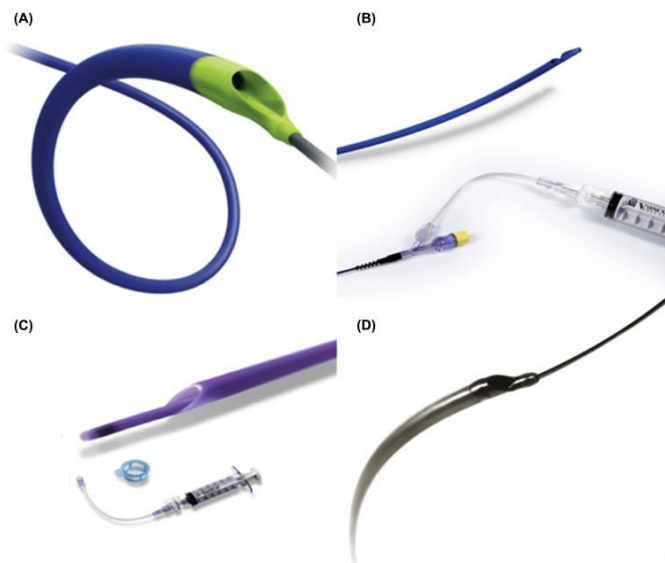
- A 52 y/o man with recent NSTEMI
- Heavy smoker 40 p/y
- ECG : Biphasic T in precordial leads
- EF= 45% Mid Anterior Septum hypokinesia
- Angiography showed cut off mid LAD with retrograde filling from RCA

ANGIOGRAPHY

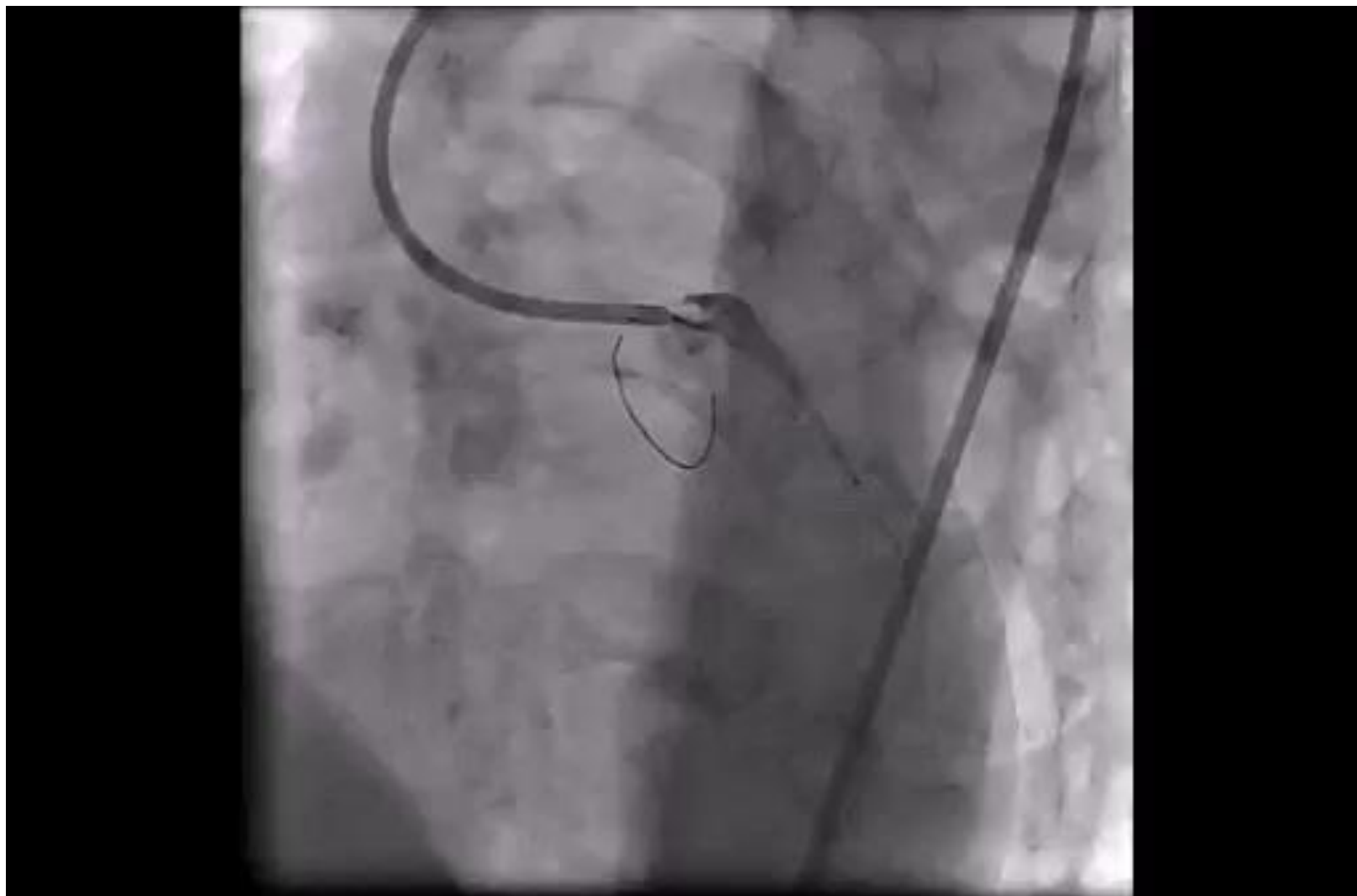








EASILY WIRING AND STENTING



Take home message

- LM iatrogenic dissection is not an uncommon complication during PCI
- Putting stent in LM false lumen is fatal and irrecoverable
- False lumen decompression is simple, available and life saving