



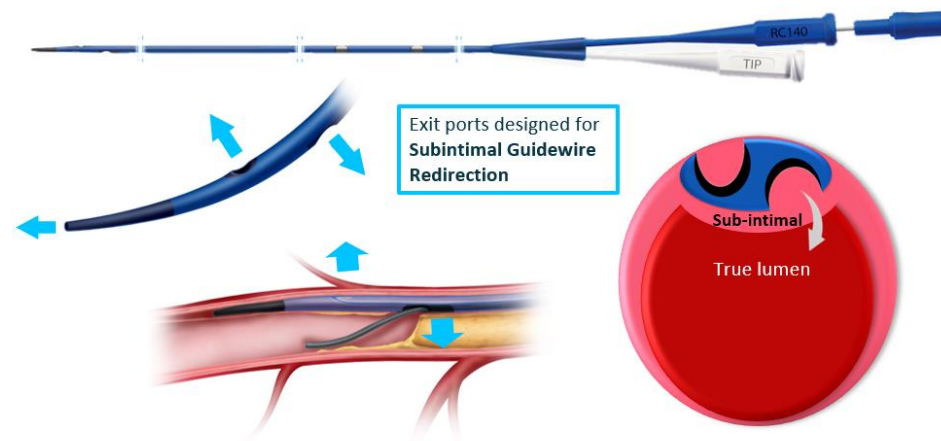
**Increasing the armamentarium for
successfull anterograde CTO crossing**

Device facilitated re-entry 2021

- ReCross Dual Lumen Catheter
- Technical updates using CrossBoss / Stingray

- The recross triple exit dual lumen microcatheter has **two** over the wire **lumens**:
- The **white hub/tip lumen** has two exit ports which origin from the same over the wire lumen
 - **distal tip exit port**
 - **proximal exit port** (12 mm proximal to the tip)
- The **blue hub lumen** has **one middle exit port at 8 (mm)** from the tip
- The **middle exit port** from the blue lumen and the **most proximal port** from the white hub/ tip lumen are positioned **in opposite (180°) of each other**
- *This enables to direct two different guidewires in three directions and to improve the options in the “parallel wire” technique*

RE CROSS
UNPARALLELED GUIDEWIRE REDIRECTION OPTIONS

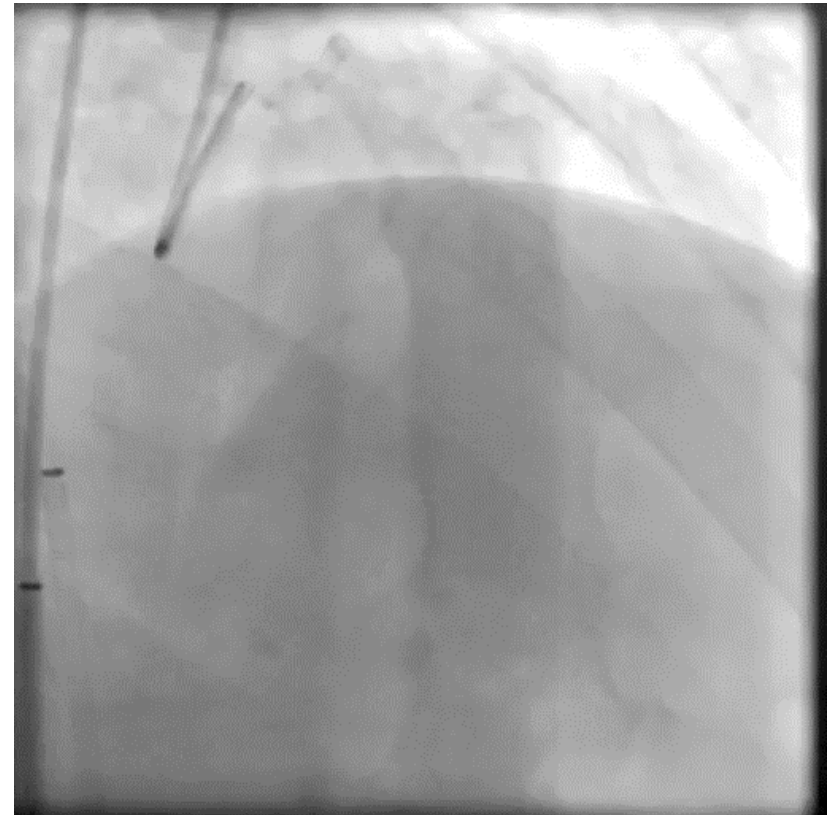
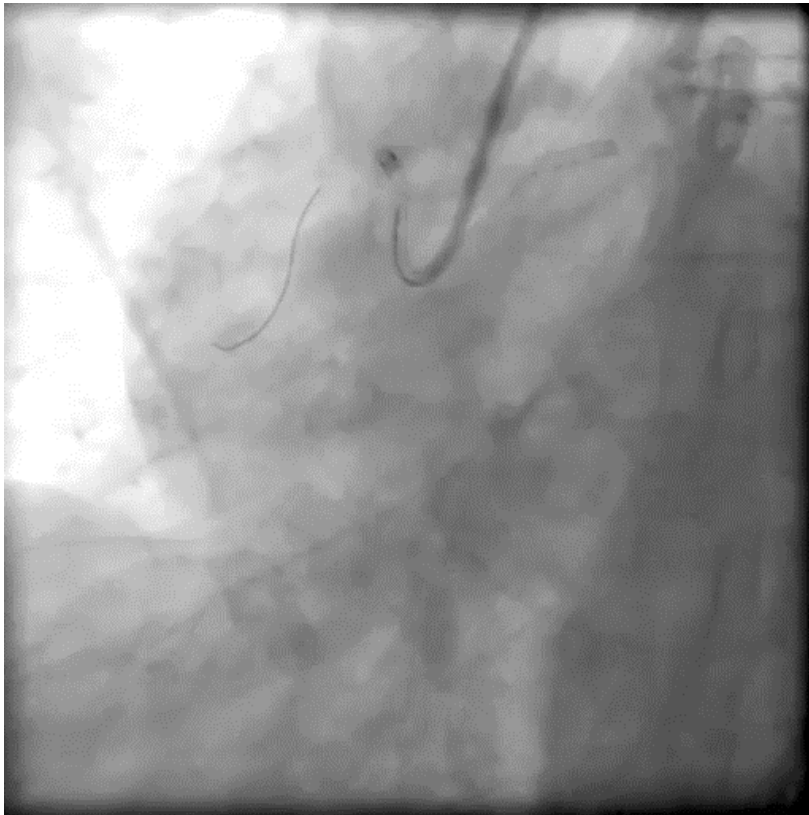


- **63 male**

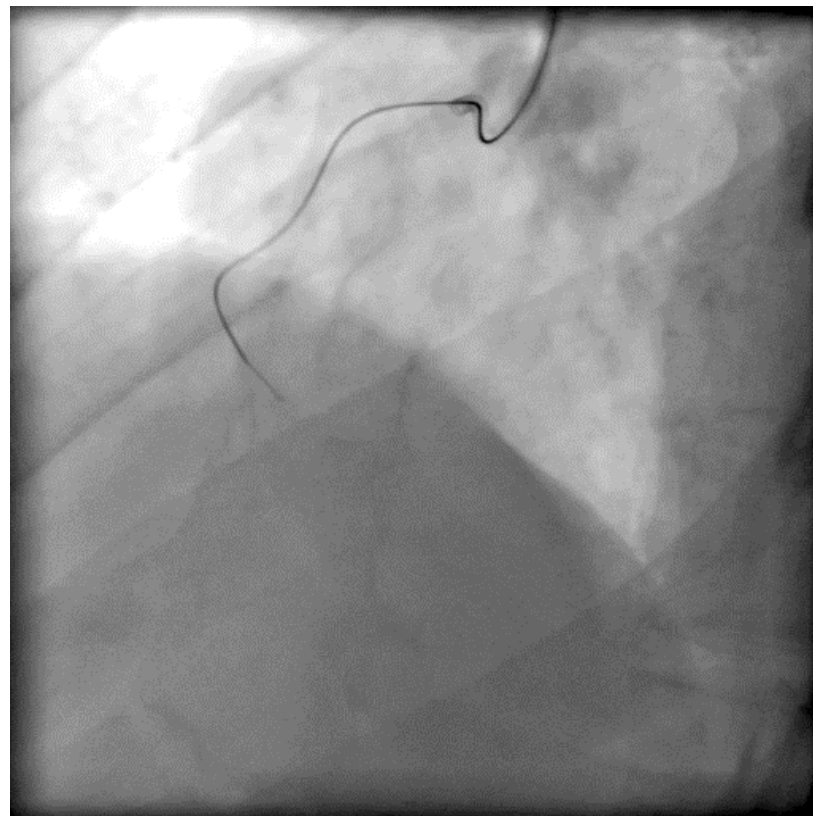
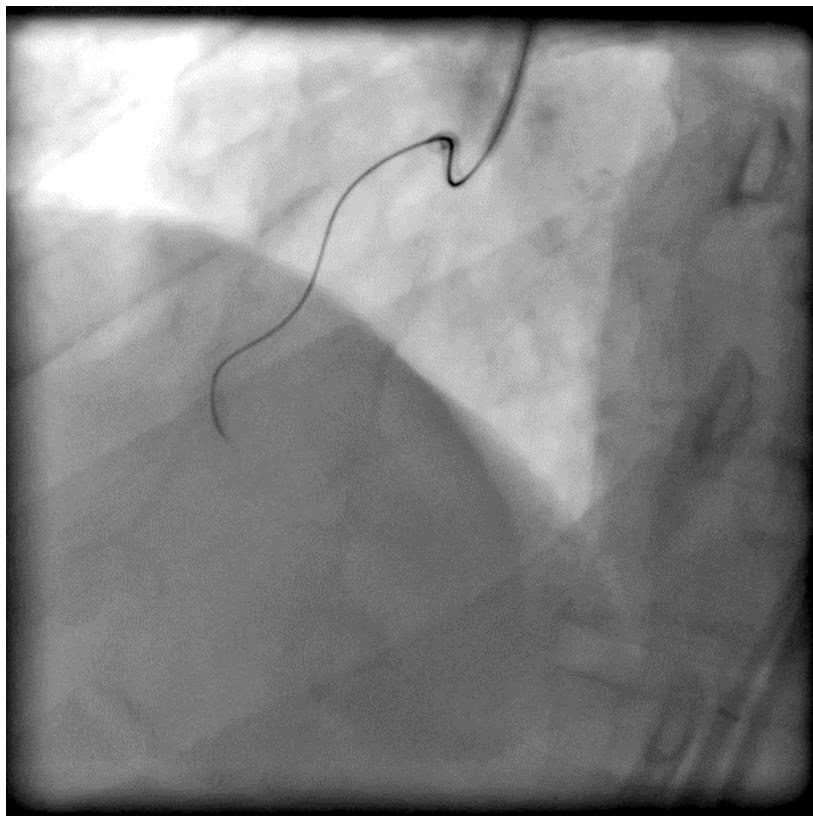
- Hypertensive hyperlipidemic
- Stable angina
- Severe LAD – Cx disease – PCI
- CTO RCA with collateral filling from LAD

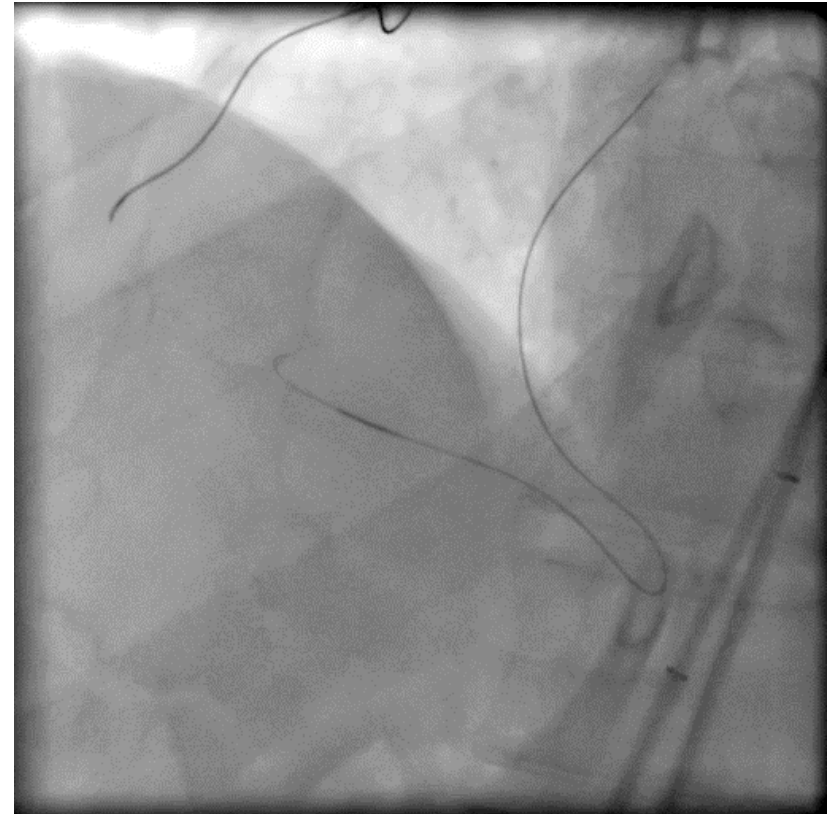
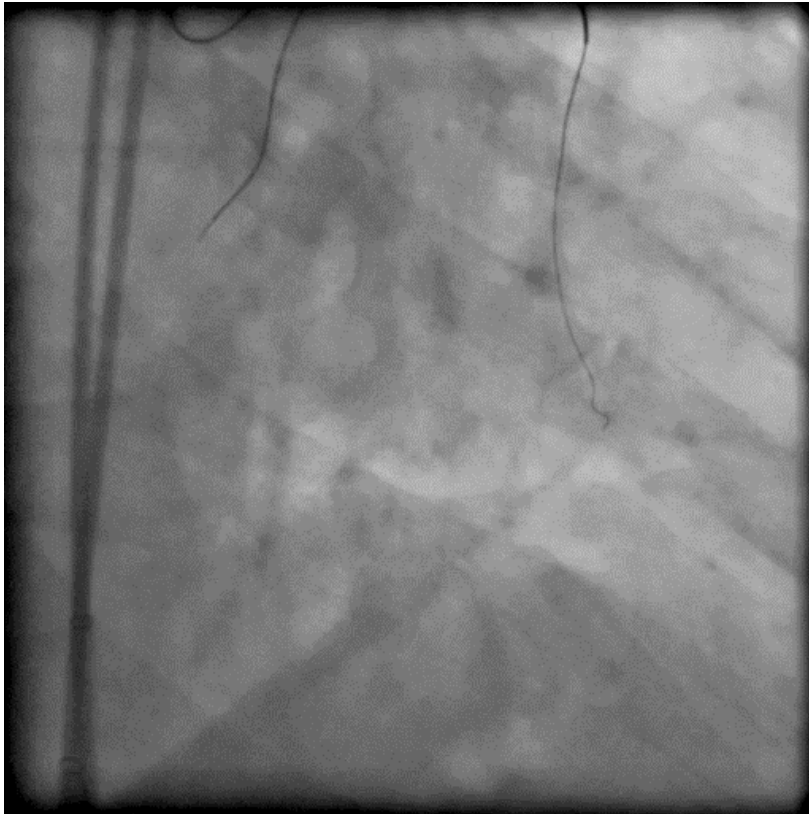
PLAN

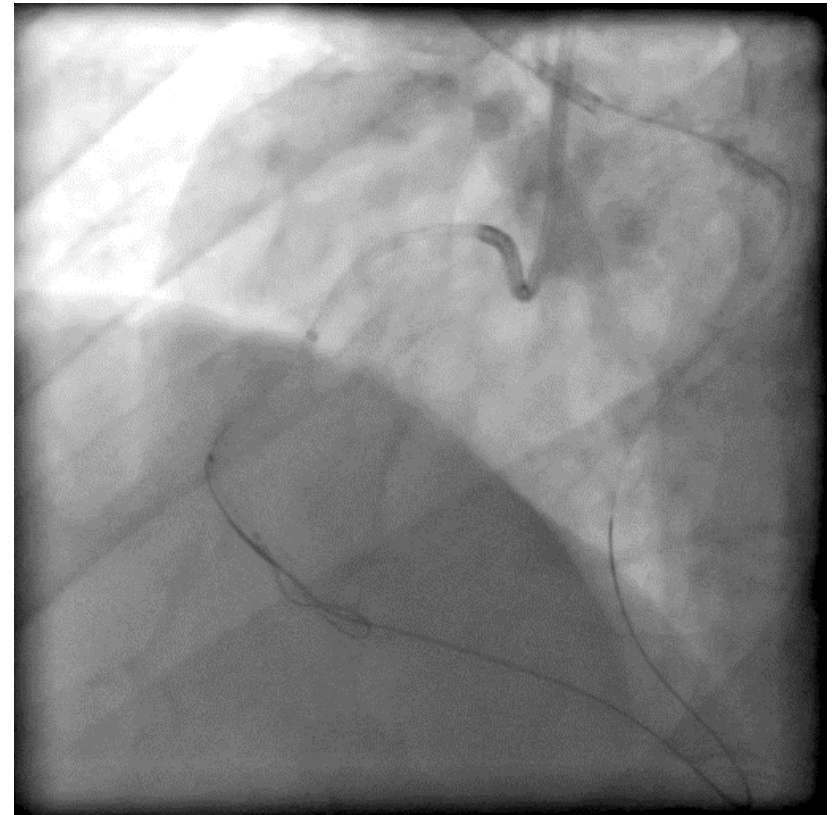
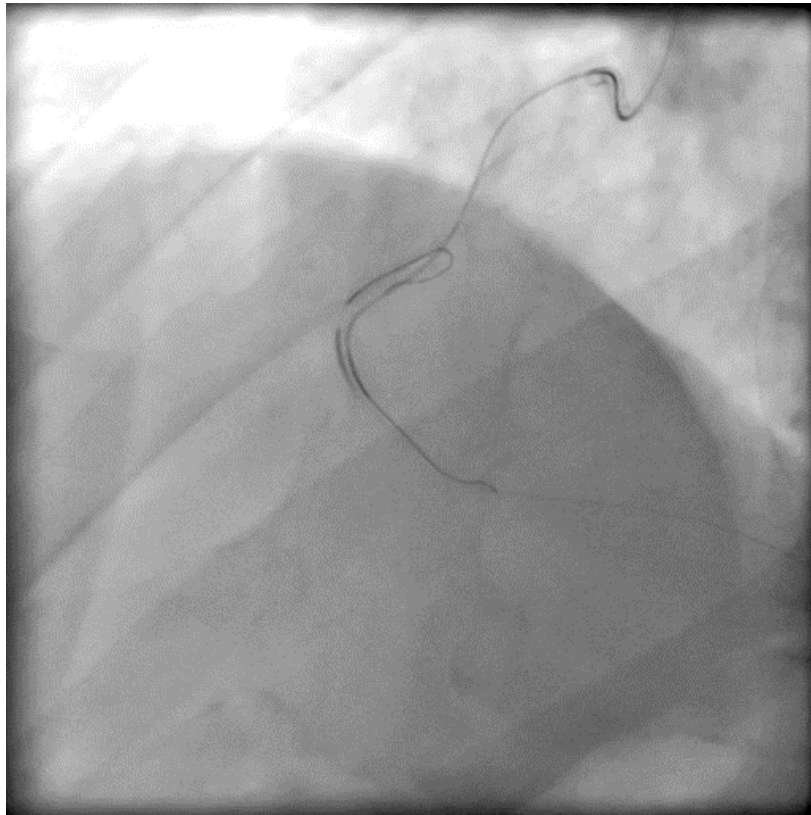
- AWE
- RETRO

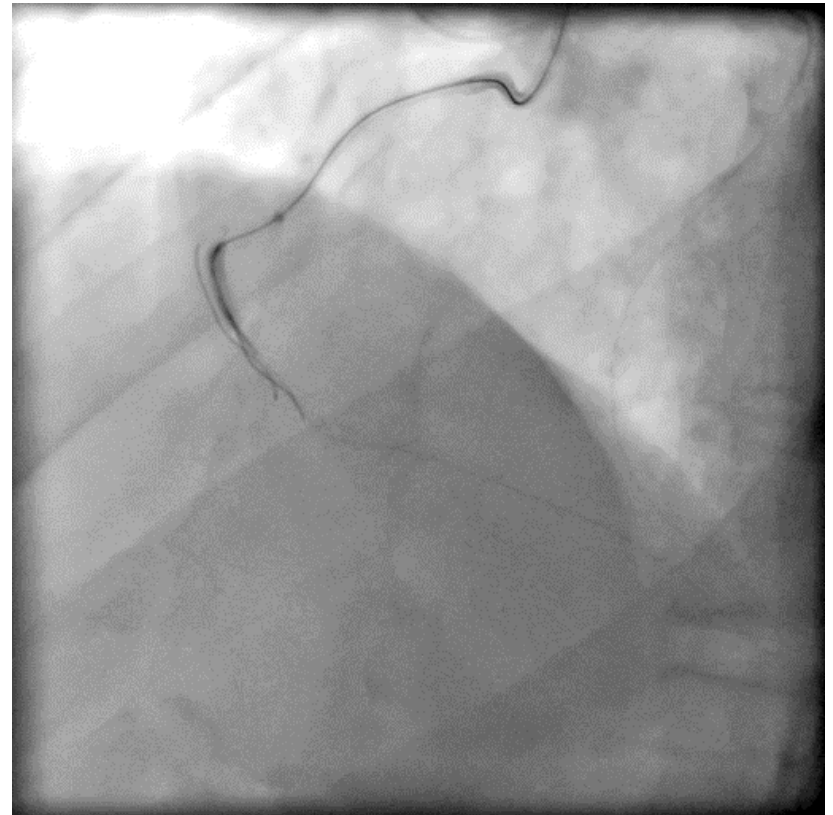
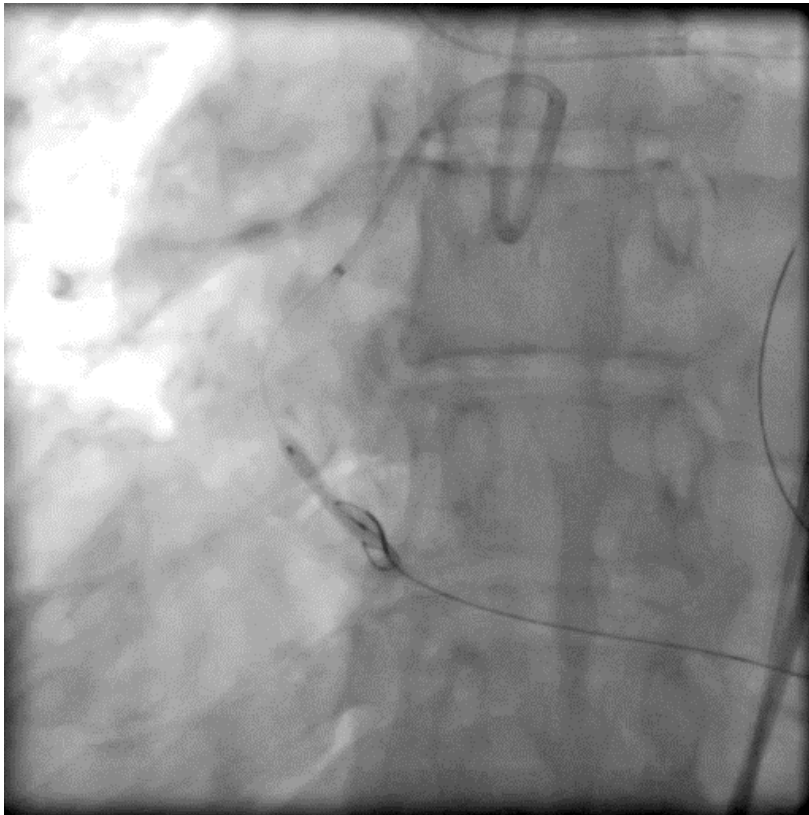


Anterograde wire escalation GAIA II – GAIA III - failed

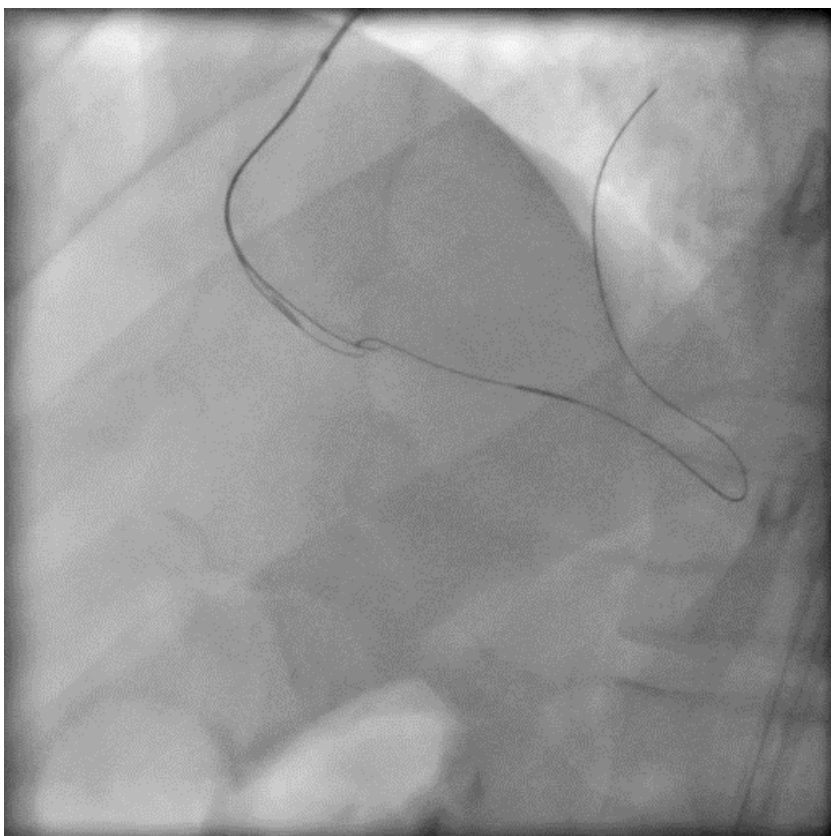




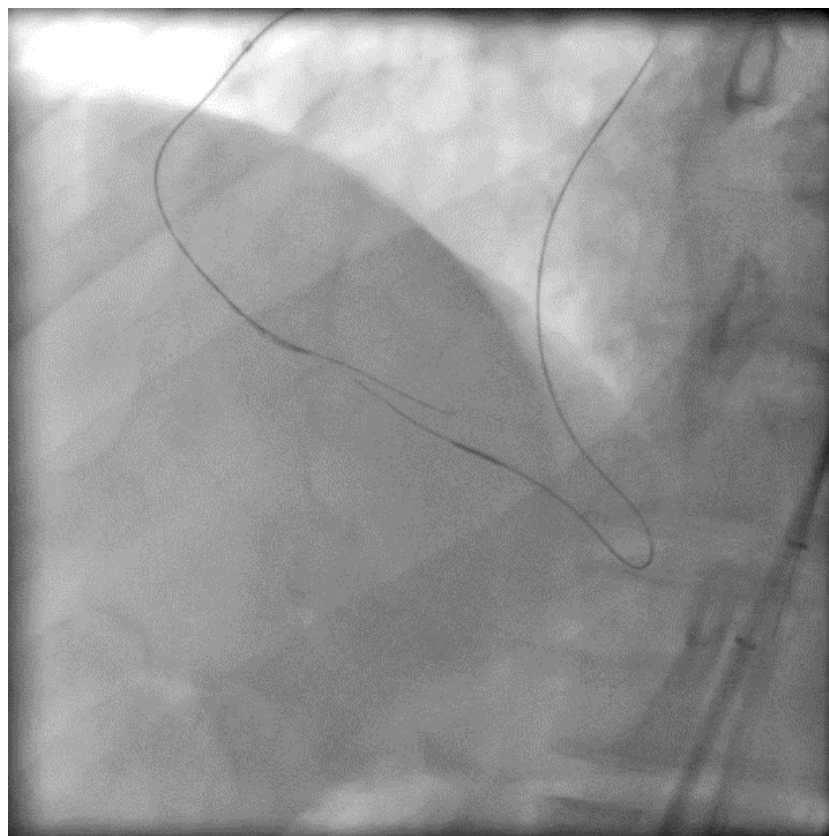




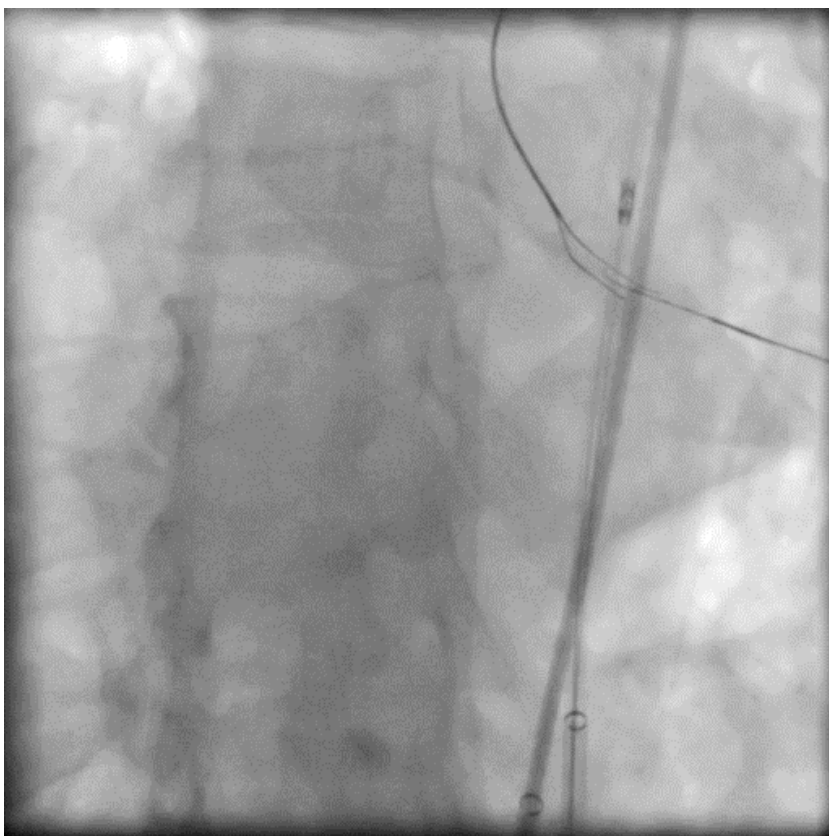
GAIA II – GAIA III



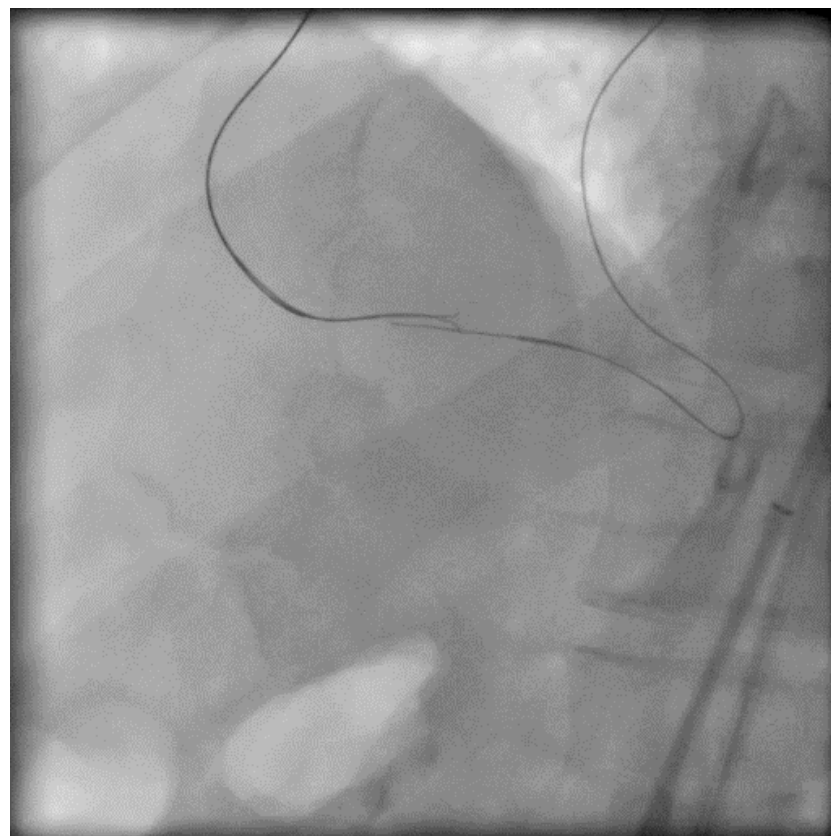
GAIA III architecture of the vessel

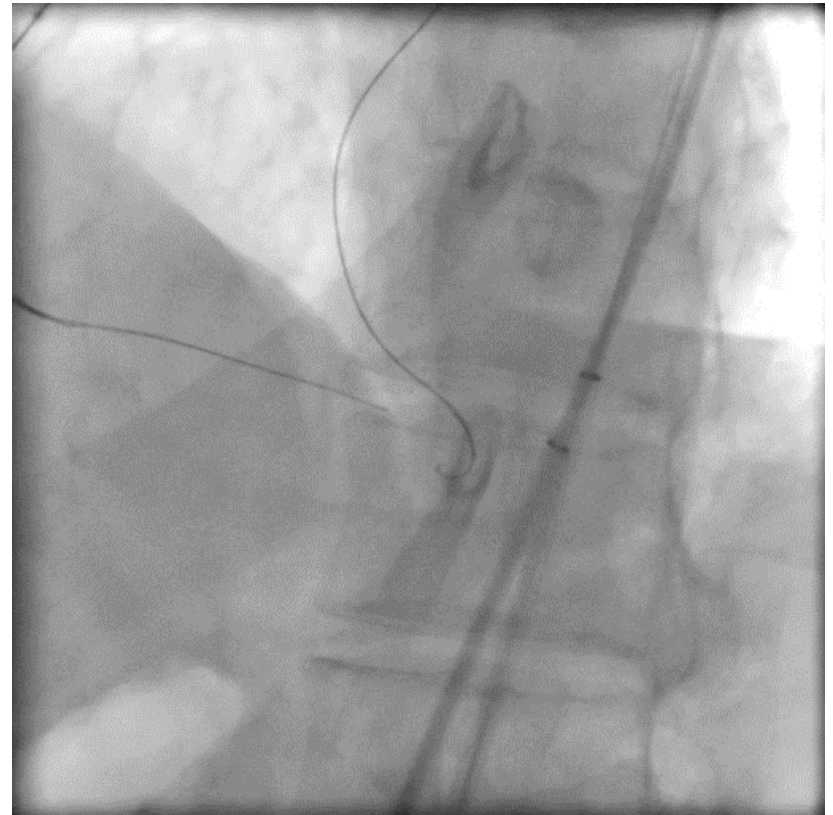
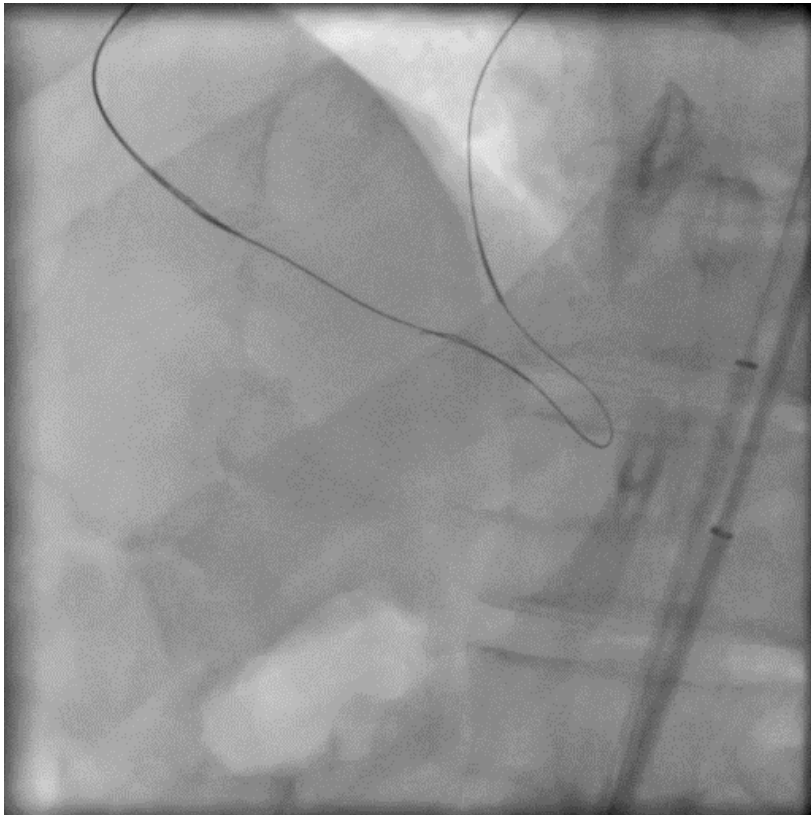


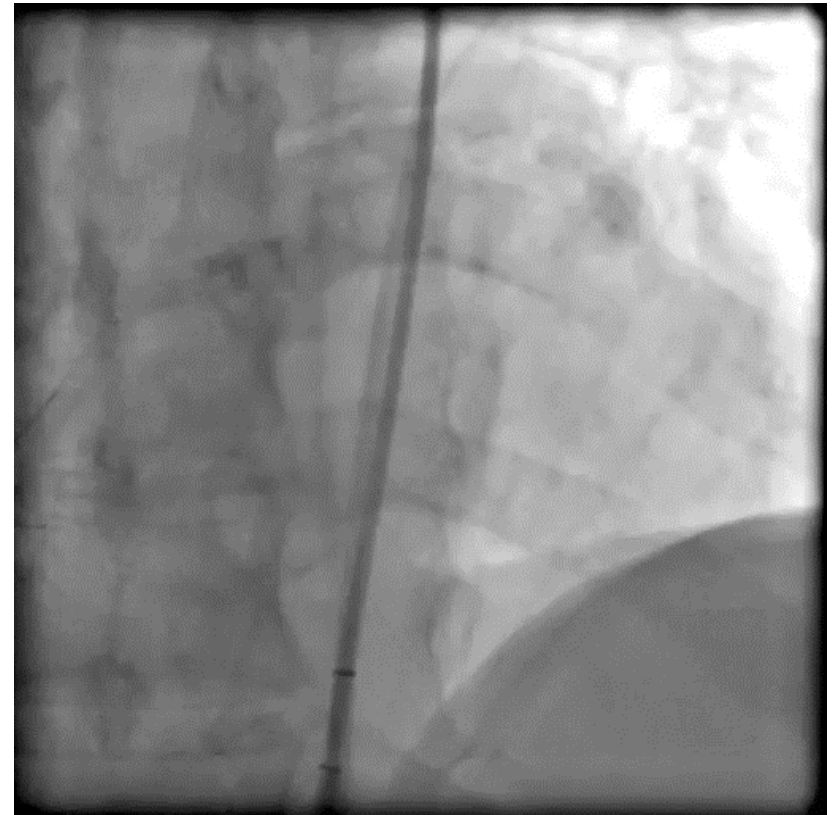
GAIA III – CONFIANZA PRO



**GAIA III – CONFIANZA – kissing
retro wire**







- **Triple exit dual lumen microcatheter (recross)** has **special features:**
 - Highly stable guidewire support catheter with ability of selective contrast injection without removing the guidewire
 - Guidewire redirection support to virtually any direction
 - Redirect the guidewire from the subintimal space to the true lumen
 - Allows simultaneous subintimal decompression
- This increases the success rate of antegrade CTO crossing *by improving the options in the “parallel wire” technique*